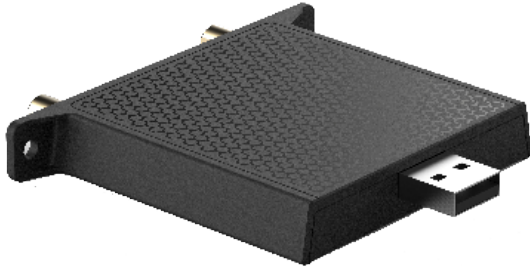


SI01

WiFi Module



- Dual wifi bandwidth: 2.4GHz / 5GHz
- Using new generation 11AC, wireless transmission rate could reach up to 433Mbps on 5GHz wifi bandwidth
- Auto adjust the bandwidth to avoid crowd bandwidth and channel interference, to get a more stable wifi
- Bluetooth 4.0: one to one pair to transfer files and data

Technical Specifications

Interface

USB	1 x USB2.0
-----	------------

Physical Specifications

Antenna	1 x 2.4G for BT
	1 x 2.4G or 5G for WiFi
Main chipset	Realtek RTL8821AU-VS
WiFi Standard	802.11 a/b/g/n/ac
Bluetooth	Support 2.1/3.0/4.0
Operating frequency	2.4G&5G(5150MHz-5250MHz&5725MHz-5825MHz)
Modulation (WiFi)	11b: DBPSK, DQPSK and CCK and DSSS 11a/g: BPSK, QPSK, 16QAM, 64QAM and OFDM 11n: BPSK, QPSK, 16QAM, 64QAM and OFDM 11ac: BPSK, QPSK, 16QAM, 64QAM, 256QAM and OFDM
Dimensions	77mm × 11mm × 99mm
Net weight	30g
Gross weight	80g
Power	
Power supply	5V DC
Power consumption	<2.5W

Packing List

Antenna	2pcs
Operating instruction	1pcs

Environment

Operating conditions	0°C ~ +40°C / 10%~90% RH* Start up should be done at above 0°C
Storage conditions	-20°C ~ +60°C / 10%~90% RH

Ordering Information

Type	Part Number	Description
WiFi Module	SI01	WiFi Module