



Riemann Platform IPC WizMind S(5) Series Products

Release Notes



ZHEJIANG DAHUA VISION TECHNOLOGY CO., LTD.

Table of Contents

1 Release Notes	1
1.1 V3.142.0000000.0	1
1.2 V3.100.0000000.6	6
1.3 V3.100.0000000.5	8
1.4 V3.100.0000000.4	9
1.5 Software Environment	9
2 Update Guide	11
2.1 Introduction	11
2.2 Preparation	11
2.3 Instructions	11
2.3.1 Updating by ConfigTool	11
2.3.2 Updating through the Webpage	13
2.3.3 Cloud Update through the Webpage	14
2.3.4 Cloud Update through DMSS	14
2.4 Checking for Update Success	15
2.4.1 Checking the Result of Update by ConfigTool	15
2.4.2 Checking the Result of Update through the Webpage	16
2.4.3 Checking the Result of Update through DMSS	16

1 Release Notes

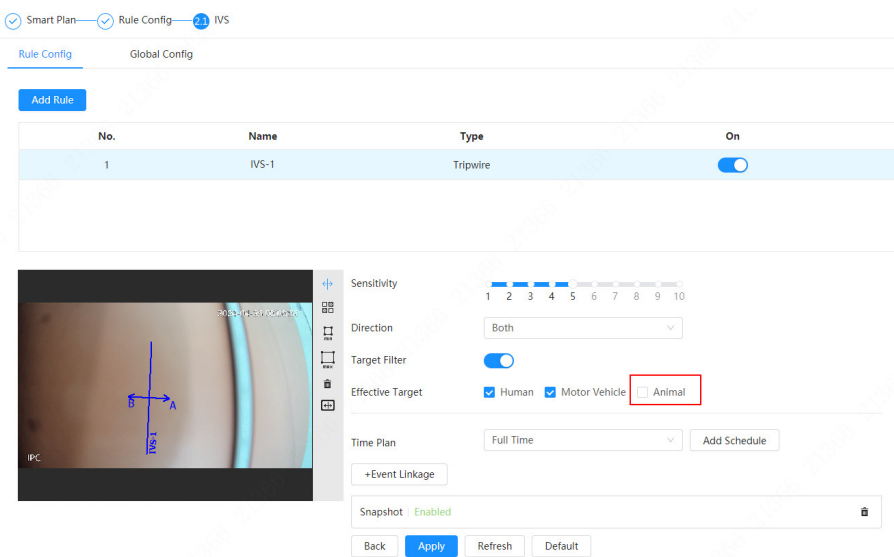
1.1 V3.142.0000000.0

Release Date

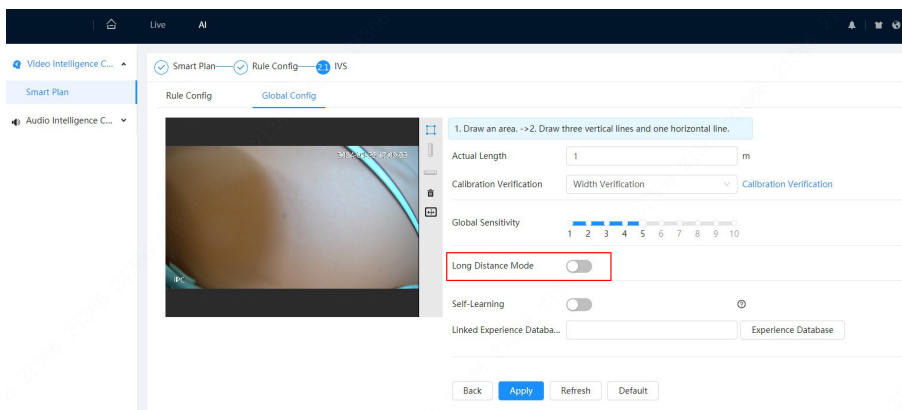
May 16, 2024

New Features

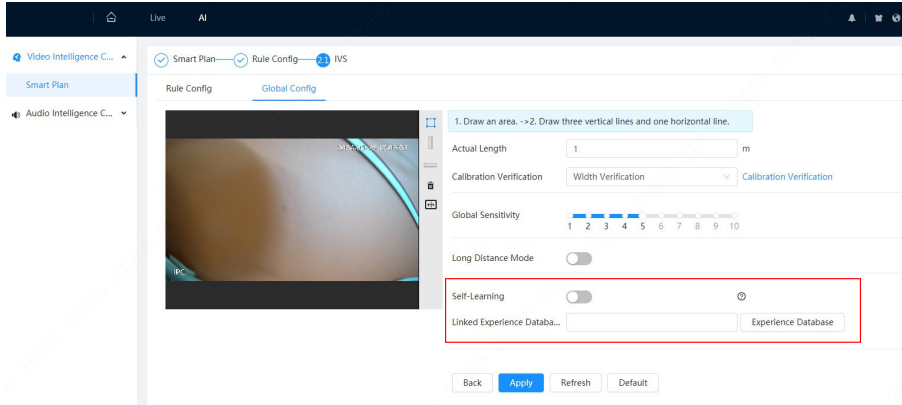
- Add animal detection to IVS.



- Supports long distance mode in IVS when AcuPick is not enabled.



- Supports self-learning in IVS.

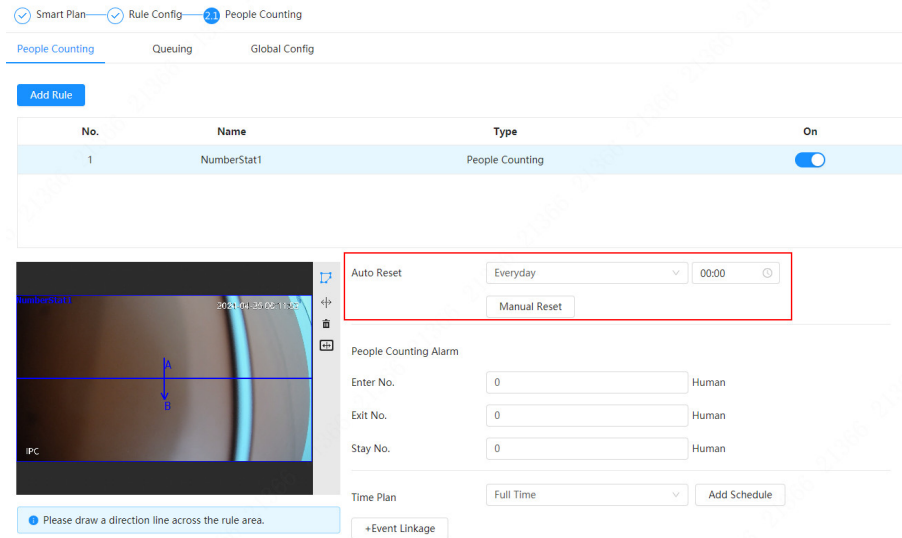


- Enable AcuPick to output motor vehicle and person attributes.

Motor vehicle: vehicle color

Person: gender, top, bottom, top color, bottom color, bag, hat, umbrella

- Enable AcuPick to output the animal type.
- OSD reset time for People Counting can be configured.



- Draw polylines for People Counting rule lines.

Add the prompt for rule drawing: Please draw a direction line across the rule area.

No.	Name	Type	On
1	NumberStat1	People Counting	<input checked="" type="checkbox"/>

Auto Reset: Everyday 00:00
Manual Reset

People Counting Alarm
Enter No.: 0 Human
Exit No.: 0 Human
Stay No.: 0 Human

Time Plan: Full Time Add Schedule

+Event Linkage

Snapshot: Enabled

Back Apply Refresh Default

- Add parameters to abnormal number of people and stay alarms for Area People Counting.

Smart Plan Rule Config **2.1** People Counting

People Counting Queuing Global Config

Add Rule

No.	Name	Type	On
1	PC-1	Area People Counting	<input checked="" type="checkbox"/>

Area People Counting Alarm

Inside No.: 30 Human(0-80)

Type: \geq Threshold

Min Duration: 30 sec(1-3600)

Repeat Alarm Time: 0 sec(0-300)

Stay Alarm

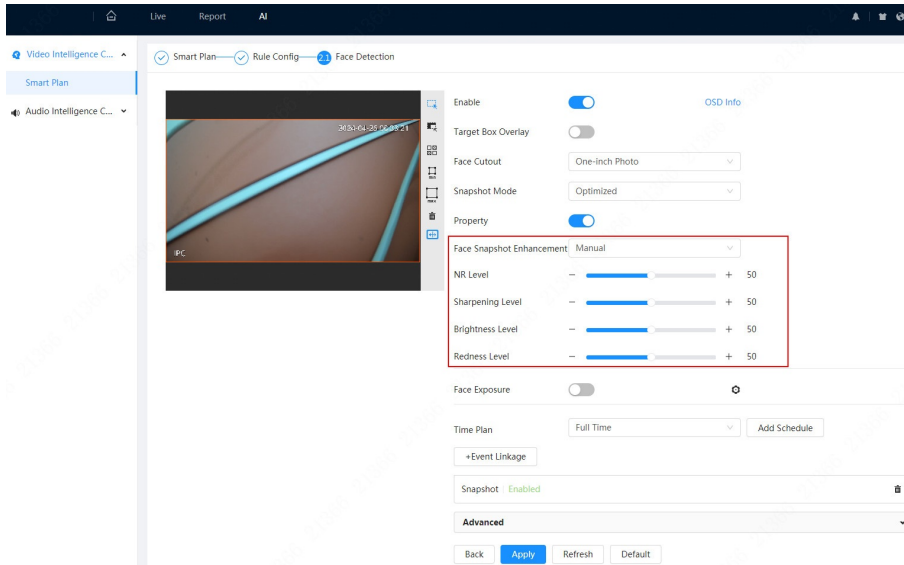
Min Duration: 30 sec(1-1800)

Repeat Alarm Time: 0 sec(0-300)

Time Plan: Full Time Add Schedule

+Event Linkage

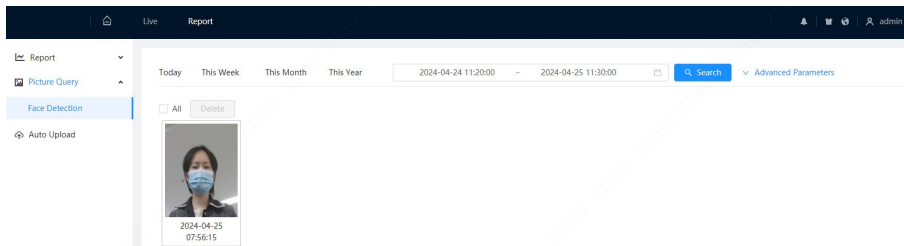
- Supports Auto, Manual and Off modes for Face Snapshot Enhancement. When manual mode is selected, NR level, sharpening level, brightness level and redness level can be configured.



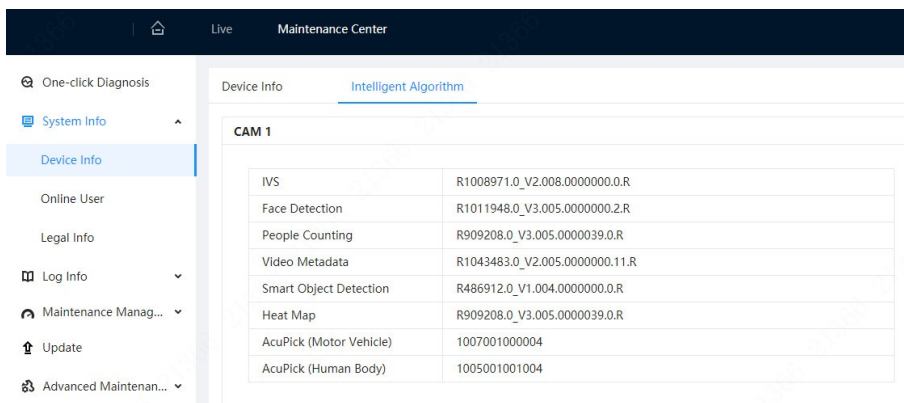
- Snapshot Angle Filters supports Up and Down, Left and Right. The small question mark next to the parameter can be clicked to view the diagram.



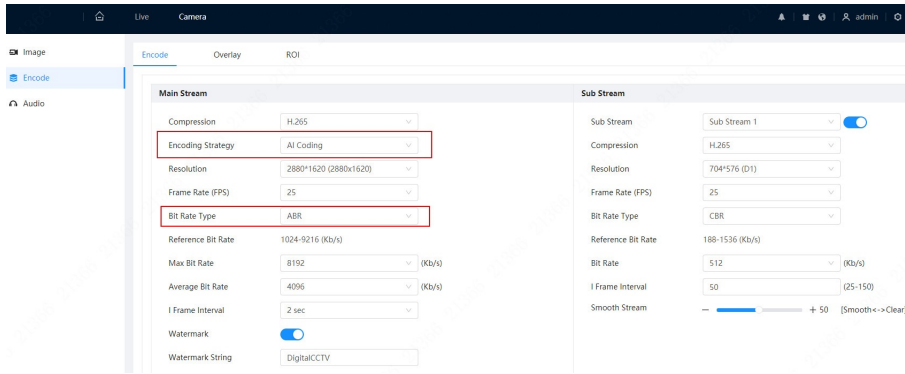
- Add face image search to Report.



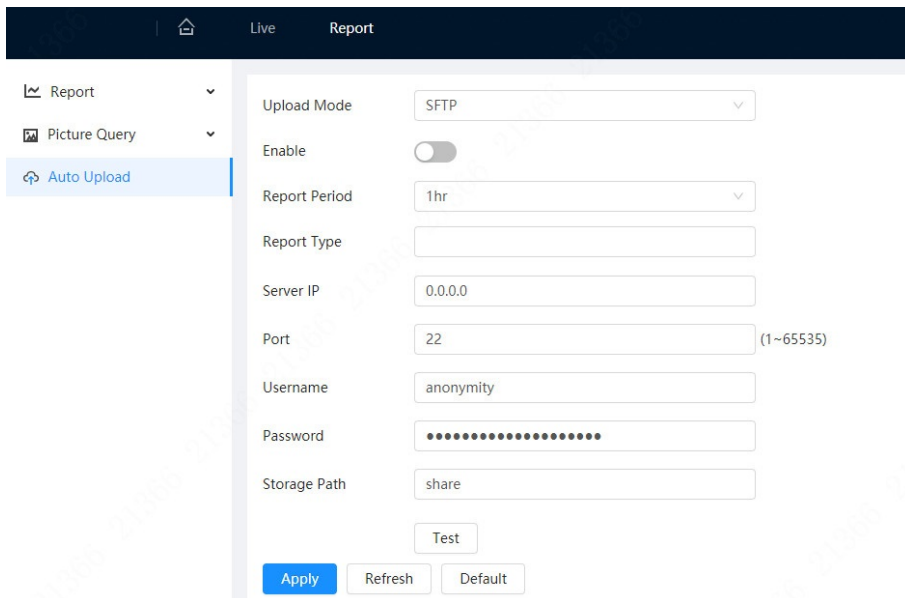
- Displays the algorithm version.



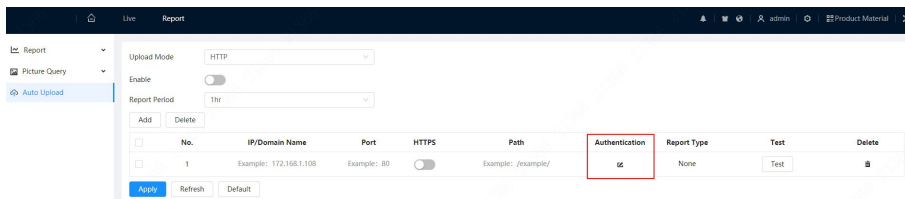
- Supports ABR when AI Coding is selected.



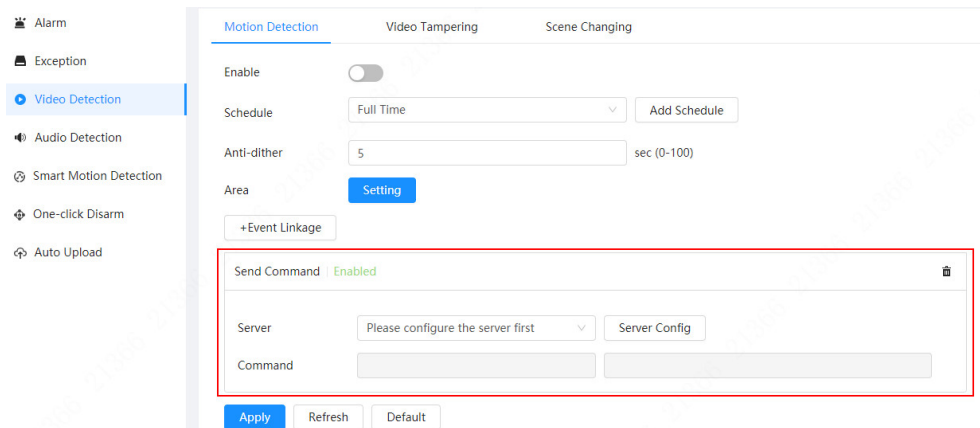
- Supports SFTP upload mode in Auto Upload.

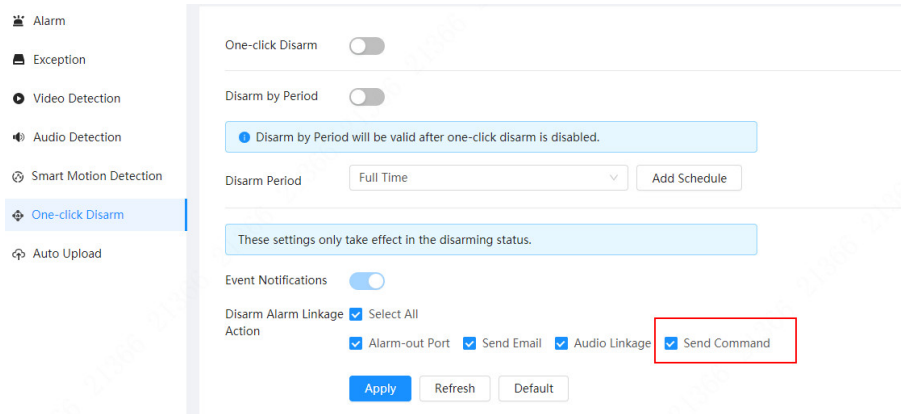


- Supports authentication for HTTP upload mode in Auto Upload.



- Add the Send Command option in Event Linkage and One-click Disarm.





Optimized Features

- Optimized the effect of Illumination Overexposure Remover.

Fixed Bugs

- Fixed the issue that update failed when cloud update was performed to the IPC through the NVR.

Third-party Access

- CGI testing tool: V2.91.3.21.
- ONVIF testing tool: V23.12.
- ONVIF: Supports Profile S, Profile G and Profile T.

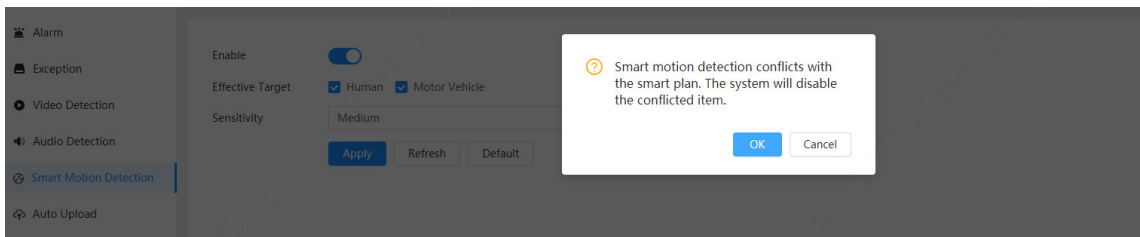
1.2 V3.100.000000.6

Release Date

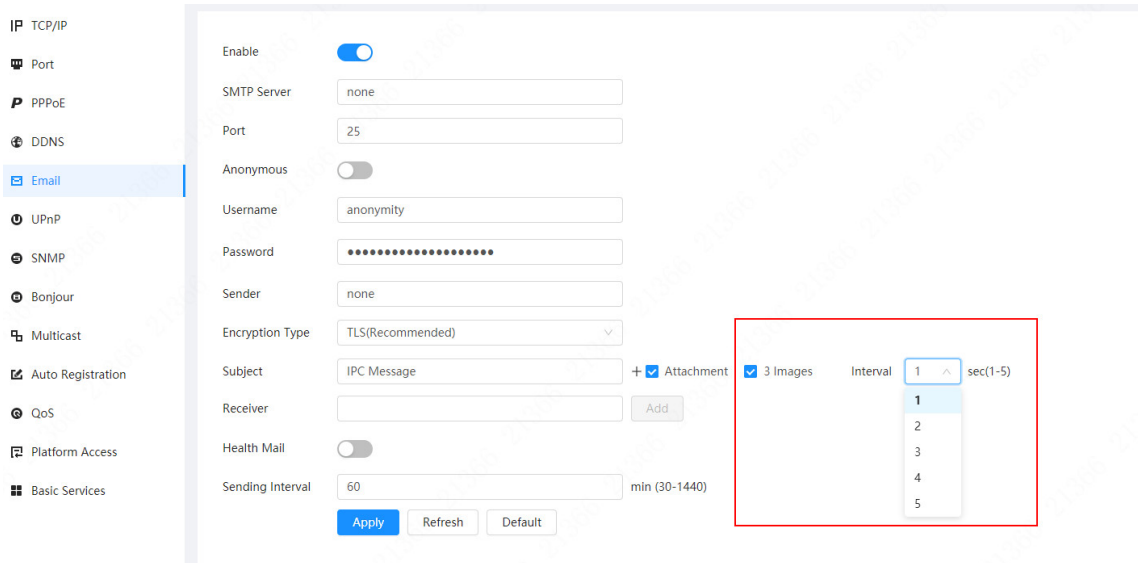
August 2, 2023

New Features

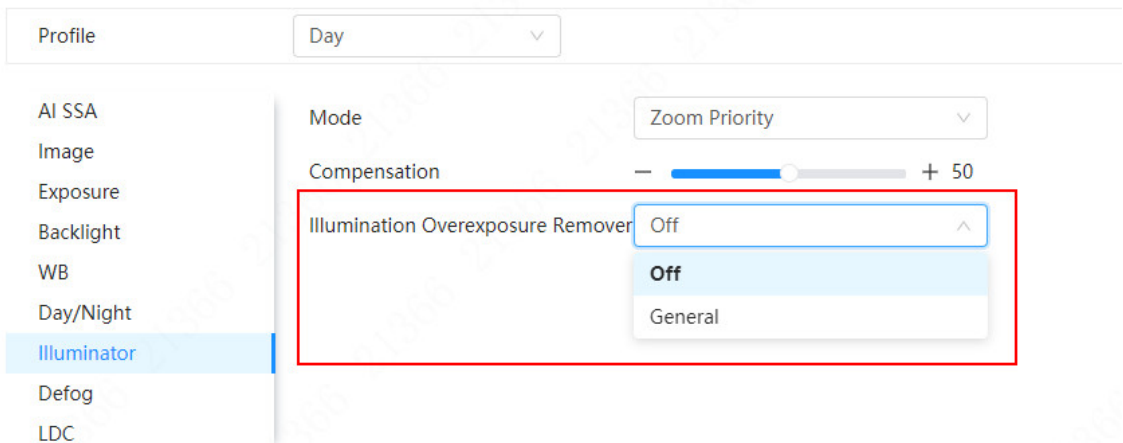
- Smart Motion Detection and AcuPick cannot be enabled at the same time.



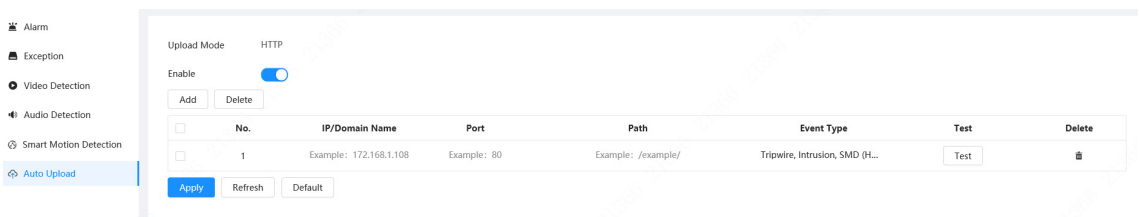
- 3 snapshots can be added to the linked email triggered by events.



- Add illumination overexposure remover. When the illuminator is turned on in low-light scenes, to avoid overexposure of nearby targets, you can enable illumination overexposure remover for the device to automatically adjust the illuminator brightness.



- Automatically upload events. When the configured events such as Tripwire and SMD occur, they are reported to the specified server through HTTP protocol.



Optimized Features

- Optimized image effect: Slightly increase brightness, delay switching from the color mode to black/white mode, and improve color cast under the forced color mode in extremely low illumination scenes.

Fixed Bugs

- After the IPC was added to NVR, H.265 was displayed as H.265_High on the NVR webpage.

Third-party Access

- CGI testing tool: V2.91.2.3.
- ONVIF testing tool: V22.12.
- ONVIF: Supports Profile S, Profile G and Profile T.

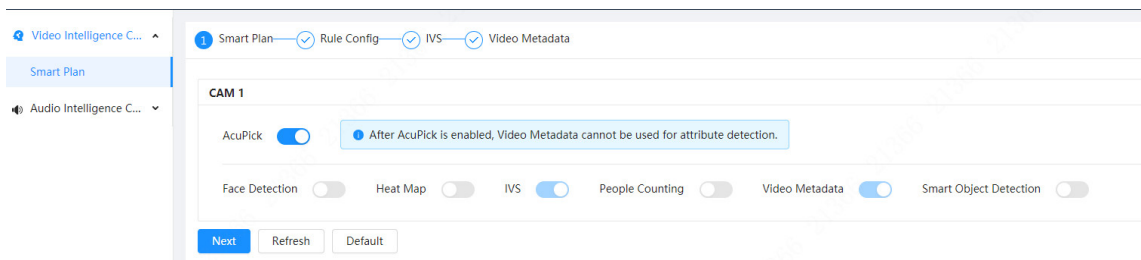
1.3 V3.100.000000.5

Release Date

May 9, 2023

New Features

- Supports AcuPick
Enable this function to achieve accurate and quick search no the connected NVR.
Note: Make sure that the connected NVR supports AcuPick mode.



Optimized Features

- Increase the detection distance of IVS and SMD.
- Improve the image effect at night.
- Devices with vari-focal lens supports LDC.

Third-party Access

- CGI testing tool: V2.91.2.3.
- ONVIF testing tool: V22.06.
- ONVIF: Supports Profile S, Profile G and Profile T.

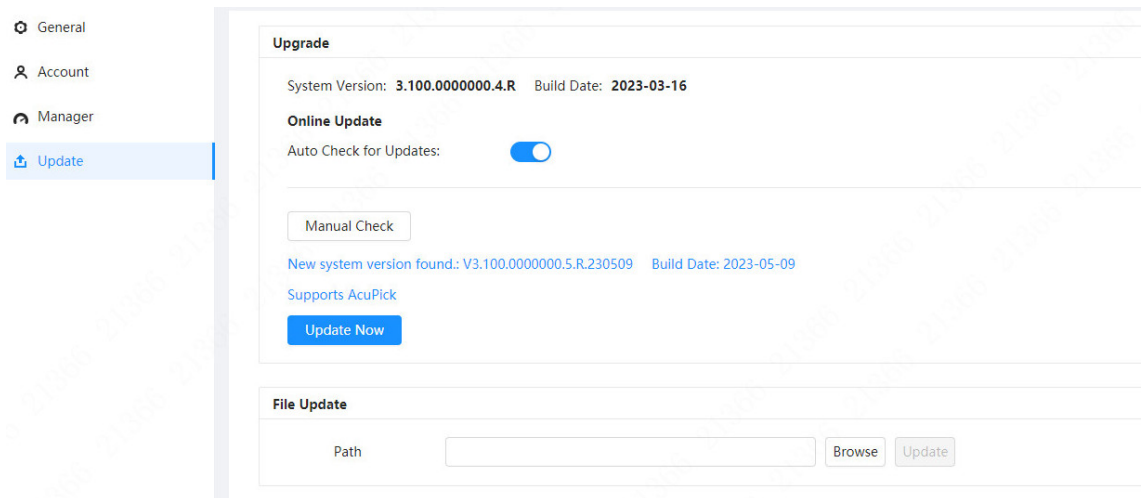
1.4 V3.100.0000000.4

Release Date

March 16, 2023

New Features

- Supports online update.



Third-party Access

- CGI testing tool: V2.91.2.3.
- ONVIF testing tool: V22.06.
- ONVIF: Supports Profile S, Profile G and Profile T.

1.5 Software Environment

Category	Mode	Version
NVR	NVR5X-EI	DH_NVR5XXX-EI_MultiLang_V4.000.0000000.1.R.230427.zip
NVR	NVR4X-4KS2/L	DH_NVR4x-4KS2L_MultiLang_V4.002.0000000.3.R.220322.zip
NVR	NVR5X-4KS2	DH_NVR5XXX-4KS2_MultiLang_V4.002.0000000.4.R.220608.zip
IVSS	IVSS7XX	DH_IVSS7XX-S1-M_Eng_V3.000.0000000.1.R.220811.zip
Tool	ConfigTool	General_ConfigTool_ChnEng_V5.001.0000001.0.R.20220728.zip
Tool	Player	General_SmartPlayer-Win32_Eng_IS_V4.001.0000003.0.R.220225.zip
App	DMSS	Download the latest version

Category	Mode	Version
DSS	DSS Pro	General_DSS-Professional_Win64_IS_V8.001.0000001.0.R. 20220727.exe

2 Update Guide

2.1 Introduction

This document provides multiple update methods for the IPCs. Users can update the IPCs to the latest version according to the update guide. The update methods include updating by ConfigTool and DMSS app, through local update package, and cloud update on the webpage.

2.2 Preparation

Before the update, please ensure that the following conditions are met.

- Update by ConfigTool: The device can work normally; the computer is installed with ConfigTool; the device is on the same network as the computer; the update package is ready.
- Update by local package: The device can work normally; the device is on the same network as the computer that is used to log in to the webpage; the update package is ready.
- Cloud update on the webpage: The device can work normally and is connected to Internet; the device is on the same network as the computer that is used to log in to the webpage.
- Update by DMSS app: The device can work normally; the mobile phone is installed with DMSS app; the device is added to DMSS app.



- Check whether the device model and program version are correct before the update.
- Decompress the compressed program package when updating by the ConfigTool and through the local package.
- In addition to the main package, there is the algorithm package (firmware.bin). When updating the system by ConfigTool and local package, update the main package first, restart the device, and then update the algorithm package. If you select cloud update, the algorithm package will be automatically updated.

2.3 Instructions

2.3.1 Updating by ConfigTool

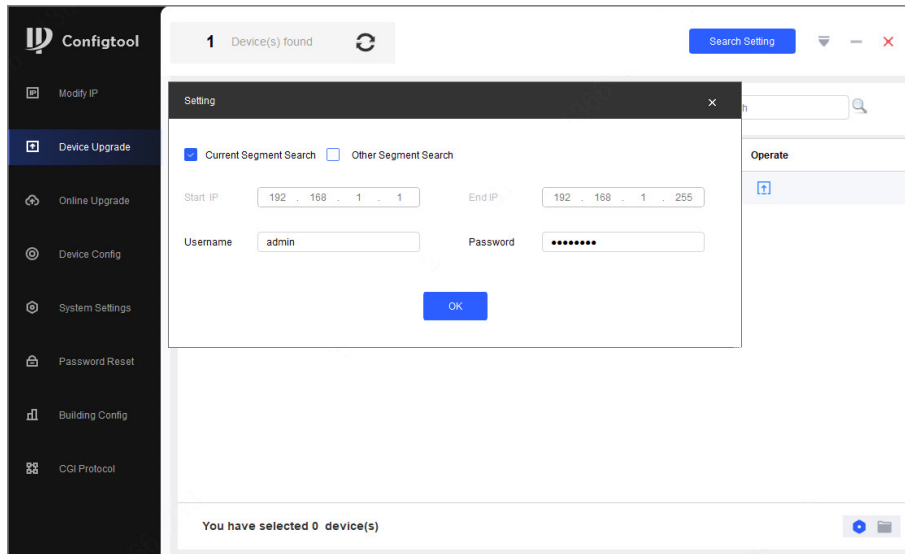
2.3.1.1 Updating One by One

Use this update method when you need to update a single device.

Procedure

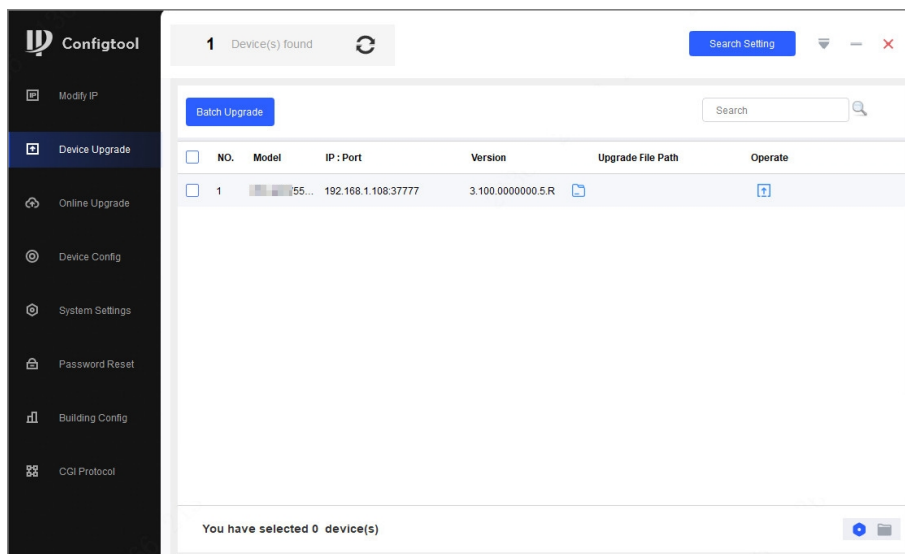
- Step 1 Open ConfigTool, and then select **Device Upgrade**.
- Step 2 Click **Search Setting** to set the search conditions.


Figure 2-1 Set search condition




Step 3 Select **Current Segment Search**, change the password to the IPC password, and then click **OK**.

Figure 2-2 View search result



Step 4 Click  next to the device to be updated, and then select the update file.

Step 5 Click  to start to update the system.

The device automatically restarts after the update is complete.



If the system update fails, check the prompt on the ConfigTool to see the reason.

2.3.1.2 Updating in Batches

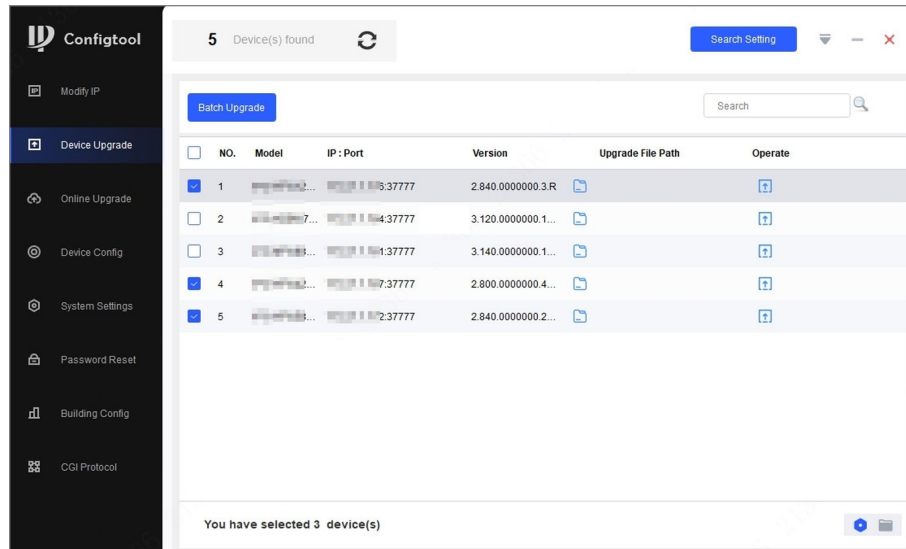
Use this method when you need to update multiple devices to the same software version.

Procedure

Step 1 Open ConfigTool, and then select **Device Upgrade**.

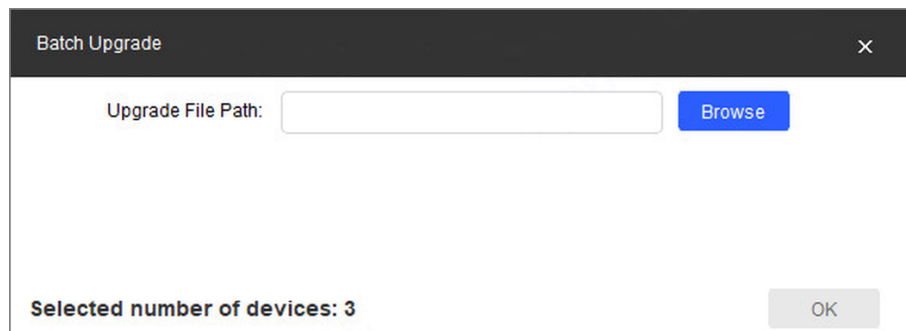
- Step 2 Click **Search Setting** to set the search conditions.
- Step 3 Select **Current Segment Search**, change the password to the IPC password, and then click **OK**.

Figure 2-3 View search result



- Step 4 Select the device to be updated, and then click **Batch Upgrade**.
- Step 5 Click **Browse** to select the update package.

Figure 2-4 Select update package



- Step 6 Click **OK** to start to update the system.
- The device automatically restarts after the update is complete.



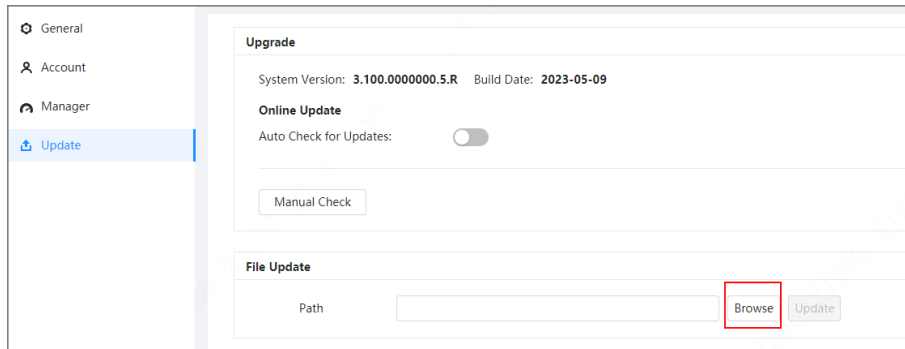
If the system update fails, check the prompt on the ConfigTool to see the reason.

2.3.2 Updating through the Webpage

Procedure

- Step 1 Log in to the webpage of the device.
- Step 2 Select **Settings** > **System** > **Update** to enter the system update page.

Figure 2-5 System update



Step 3 Click **Browse**, select the update file, and then click **Update**.

Do not cut off the power supply during the update process. The device automatically restarts when the update is complete.

Step 4 After the restart, you are redirected to the login page for you to log in to the device again.

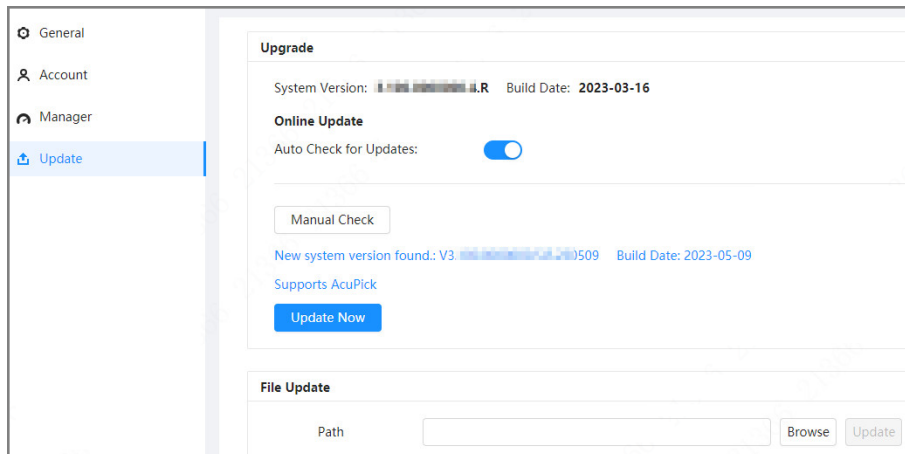
2.3.3 Cloud Update through the Webpage

Procedure

Step 1 Log in to the webpage of the device.

Step 2 Select **Settings** > **System** > **Update** to enter the system update page.

Figure 2-6 System update



Step 3 Click **Manual Check**.

Select Auto-check, and when a new version is available, the device automatically detects it.

Step 4 If a new version is available, click **Update Now**. The system downloads the version file and starts the update process.

Step 5 After the restart, you are redirected to the login page for you to log in to the device again.

2.3.4 Cloud Update through DMSS

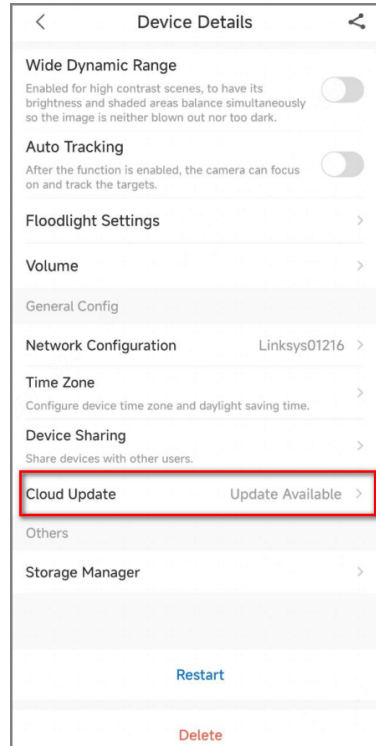
Procedure

Step 1 Open DMSS app.

Step 2 Select **Device Details**.

If it displays **Update Available** on **Cloud Update** area, then there is available new version for update.

Figure 2-7 Device details



Step 3 Tap **Cloud Update** to go to the update page.

Step 4 Confirm the **Current Version** and **Latest Version**, and then tap **Update**.

Step 5 After being updated successfully, the device will restart.

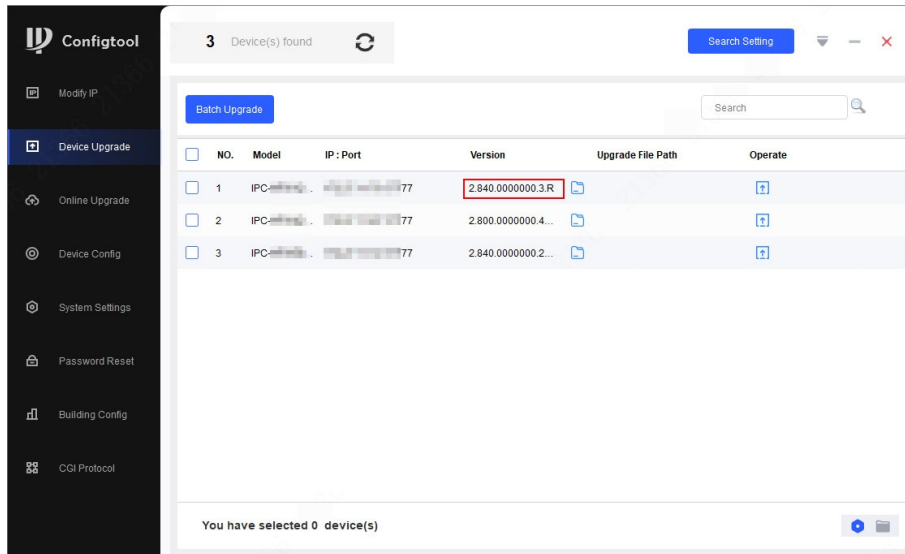
2.4 Checking for Update Success

2.4.1 Checking the Result of Update by ConfigTool

After the update is complete, wait until the device restarts. Click  to check the system version.

If the version is the same as the software version of the update package, it means the update is successful.

Figure 2-8 Check version information

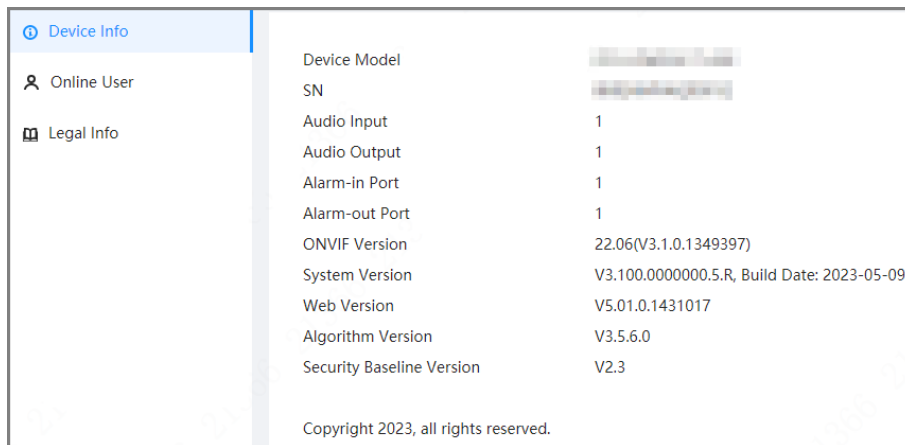


2.4.2 Checking the Result of Update through the Webpage

Procedure

- Step 1 Log in to the webpage of the device.
- Step 2 Select **Settings** > **System Info** > **Device Info** to check the update result.

Figure 2-9 Check update result

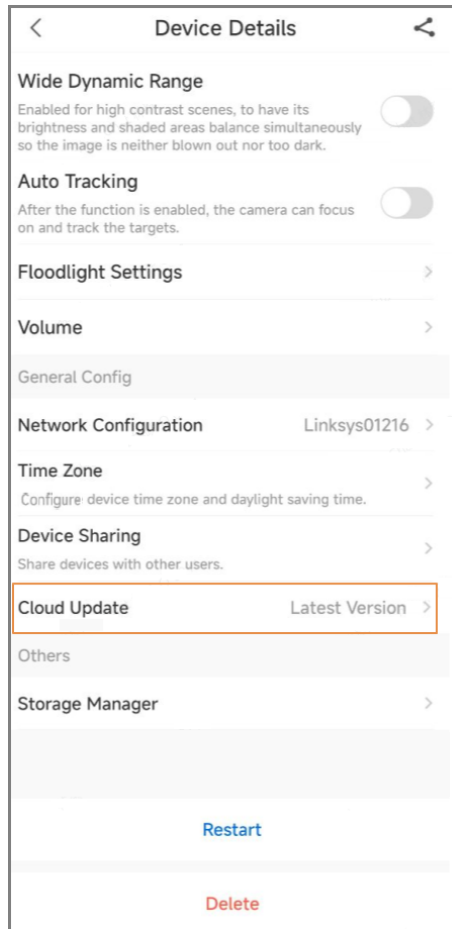


2.4.3 Checking the Result of Update through DMSS

Procedure

- Step 1 Open DMSS app.
- Step 2 Select **Device Details**.
- Step 3 Confirm that you have updated to the latest version.

Figure 2-10 Device details



ENABLING A SMARTER SOCIETY AND BETTER LIVING

ZHEJIANG DAHUA VISION TECHNOLOGY CO., LTD.

Address: No. 1399, Binxing Road, Binjiang District, Hangzhou, P. R. China | Website: www.dahuasecurity.com | Postcode: 310053

Email: dhoverseas@dhvisiontech.com | Tel: +86-571-87688888 28933188