



Taurus V3.140.0000000.21.R. 240514

Release Notes



Table of Contents

1 Release Notes.....	1
1.1 V3.140.0000000.21.R.240514.....	1
1.2 V3.140.0000000.19.R.240430.....	1
1.3 V3.140.0000000.15.R.240330.....	2
1.4 V3.140.0000000.12.R.240206.....	3
1.5 V3.140.0000000.13.R.240124.....	3
1.6 V3.140.0000000.10.R.240116.....	4
1.7 V3.140.0000000.11.R.240119.....	4
1.8 V3.140.0000000.7.R.231224.....	5
1.9 V3.140.0000000.4.R.231122.....	6
1.10 V3.140.0000000.3.R.231121.....	6
1.11 V3.140.0000000.2.R.231108.....	7
1.12 V3.120.0000000.41.R.231020.....	8
1.13 V3.120.0000000.38.R.231008.....	8
1.14 V3.120.0000000.36.R.230828.....	9
1.15 Software Environment.....	9
2 Update Guide.....	11
2.1 Introduction.....	11
2.2 Preparation.....	11
2.3 Instructions.....	11
2.3.1 Updating by ConfigTool.....	11
2.3.2 Updating through the Webpage.....	13
2.3.3 Cloud Update through the Webpage.....	14
2.3.4 Cloud Update through DMSS.....	14
2.4 Checking for Update Success	15
2.4.1 Checking the Result of Update by ConfigTool.....	15
2.4.2 Checking the Result of Update through the Webpage.....	16
2.4.3 Checking the Result of Update through DMSS.....	16

1 Release Notes

1.1 V3.140.0000000.21.R.240514

Release Date

May 29, 2024

New Features

- Add color cast correction for Full-Color Dual-Lens Splicing Bullet WizMind Network Camera.

Optimized Features

- None.

Fixed Bugs

- Fixed the vulnerabilities of the program on the official website for Full-Color Dual-Lens Splicing Bullet WizMind Network Camera.
- Fixed the issue of excessive flash writing by AcuPick causing insufficient flash lifespan and fixed the vulnerabilities of the program on the official website for series 5 full-color products.
- Fixed the issue of no recorded videos for general motion detection events for series 3 products.

Third-party Access

- ONVIF testing tool: V23.12.
- ONVIF: Supports Profile S, Profile T, Profile G and Profile M.
- Milestone testing tool: Milestone XProtect Corporate 2019 R2
- GENETEC testing tool: Security Center Version 5.7SR1(5.7.529.12)

1.2 V3.140.0000000.19.R.240430

Release Date

May 15, 2024

New Features

- S5 cameras in Series 3: The illuminator turns on when the device is powered on.
- 4 MP WizMind Dual-Lens People Counting Network Camera: You can view people profile, remove specific person databases, reduce repeated alarms through deduplication, configure 2 alarm thresholds, use the optimized algorithm for small target detection, and export multiple reports from different services to one Excel file.

Optimized Features

- None.

Fixed Bugs

- None.

Third-party Access

- ONVIF testing tool: V23.12
- ONVIF: Supports Profile S, Profile T, Profile G and Profile M
- Milestone testing tool: Milestone XProtect Corporate 2019 R2
- GENETEC testing tool: Security Center Version 5.7SR1(5.7.529.12)

1.3 V3.140.0000000.15.R.240330

Release Date

April 25, 2024

New Features

- Release the baseline program for series 5 4 MP HDMI E vari-focal dome cameras and R fixed-focal dome cameras which support HDMI ports, high frame rate HDMI output and self-adaptive HDMI output.

Optimized Features

- None.

Fixed Bugs

- For series 3 products, fixed the issue that videos could not be viewed on DMSS and fixed general network security vulnerabilities.
- For series 4 products, fixed the issue that the network adapter occasionally reset abnormally and fixed general network security vulnerabilities.
- For series 8 explosion-proof products, fixed the issue that videos could not be viewed on DMSS and the network adapter occasionally reset abnormally, and fixed general network security vulnerabilities.
- For series 5 5G vari-focal K1 bullet cameras, fixed the issue that errors were caused by hot swapping of 4G modules.

Third-party Access

- ONVIF testing tool: V23.12

- ONVIF: Supports Profile S, Profile T, Profile G and Profile M
- Milestone testing tool: Milestone XProtect Corporate 2019 R2
- GENETEC testing tool: Security Center Version 5.7SR1(5.7.529.12)

1.4 V3.140.0000000.12.R.240206

Release Date

March 8, 2024

New Features

- For series 5 full-color products, the snapshot resolution is based on the main stream and 4K resolution is supported.

Optimized Features

- None.

Fixed Bugs

- None.

Third-party Access

- ONVIF testing tool: V23.06
- ONVIF: Supports Profile S, T, G, M
- Milestone testing tool: Milestone XProtect Corporate 2019 R2
- GENETEC testing tool: Security Center Version 5.7SR1(5.7.529.12)

1.5 V3.140.0000000.13.R.240124

Release Date

February 6, 2024

New Features

- None.

Optimized Features

- None.

Fixed Bugs

- I2C deadlock resulted in blank image of 3 series products.
- Fisheye dewarp failure resulted in decreased yield rate of 3 series products during production.

Third-party Access

- ONVIF testing tool: V22.12
- ONVIF: Supports Profile S, Profile T, Profile G, and Profile M
- Milestone testing tool: Milestone XProtect Corporate 2019 R2
- GENETEC testing tool: Security Center Version 5.7SR1 (5.7.529.12)

1.6 V3.140.0000000.10.R.240116

Release Date

February 2, 2024

New Features

- None.

Optimized Features

- Reduces IVS false alarms of 2 × 4MP TiOC Duo Splicing Fixed-focal Bullet/Eyeball WizSense Network Camera.

Fixed Bugs

- The period of audio linkage could not be configured for 2 × 4MP TiOC Duo Splicing Fixed-focal Bullet/Eyeball WizSense Network Camera.

Third-party Access

- ONVIF testing tool: V22.12
- ONVIF: Supports Profile S, Profile T, Profile G, and Profile M.
- Milestone testing tool: Milestone XProtect Corporate 2019 R2
- GENETEC testing tool: Security Center Version 5.7SR1 (5.7.529.12)

1.7 V3.140.0000000.11.R.240119

Release Date

January 26, 2024

New Features

- None.

Optimized Features

- None.

Fixed Bugs

- The image of 4MP Explosion-proof IR Bullet WizMind Network Camera had dark corners.

Third-party Access

- ONVIF testing tool: V22.12
- ONVIF: Supports Profile S, T, G, M
- Milestone testing tool: Milestone XProtect Corporate 2019 R2
- GENETEC testing tool: Security Center Version 5.7SR1 (5.7.529.12)

1.8 V3.140.0000000.7.R.231224

Release Date

January 8, 2024

New Features

- Full-Color Dual-Lens Splicing Bullet WizMind Network Camera supports enabling and disabling LLDP on DoLink Care.
- Full-color Fixed-focal Warm LED Eyeball WizMind Network Camera, Bullet Network Camera, and Explosion Proof IR Dome WizMind Network Camera support enabling and disabling LLDP on DoLink Care.

Optimized Features

- The splicing angle of Full-Color Dual-Lens Splicing Bullet WizMind Network Camera is optimized from 170° to 175°, and the splicing performance is verified and optimized.

Fixed Bugs

- The milestone certification test of Explosion-proof IR Bullet WizMind Network Camera and Vandal-proof Dome Camera Network Camera failed.
- The splicing image of Eyeball Network Camera was blurred.

Third-Party Access

- ONVIF testing tool: V22.12
- ONVIF: Supports Profile S, T, G, M
- Milestone testing tool: Milestone XProtect Corporate 2019 R2
- GENETEC testing tool: Security Center Version 5.7SR1(5.7.529.12)

1.9 V3.140.0000000.4.R.231122

Release Date

December 7, 2023

New Features

- None.

Optimized Features

- Reduce false alarms triggered by static targets for series 3 cameras.

Fixed Bugs

- None.

Third-party Access

- ONVIF testing tool: V22.12
- ONVIF: Supports Profile S, T, G, M
- Milestone testing tool: Milestone XProtect Corporate 2019 R2
- GENETEC testing tool: Security Center Version 5.7SR1(5.7.529.12)

1.10 V3.140.0000000.3.R.231121

Release Date

December 2, 2023

New Features

- Series 3 cameras: Add AI-SSA 2.0 function and SMD QuickPick switch, and optimize IVS which includes switching between indoor and outdoor models and detecting without distinguishing target types.
- Series 5 full-color products: Enable auto long exposure by default.
- Series 3XXX-S5 cameras: Supports AcuPick.

Optimized Features

- None.

Fixed Bugs

- Series 3 cameras: Fixed the issue of overexposed images.
- Series 4 cameras: Fixed the issue of ONVIF verification failure and other general problems caused by DST configuration.
- 8-series 4 MP dual-lens network cameras: Fixed the issue that there were no streams accidentally.

Third-party Access

- ONVIF testing tool: V22.12
- ONVIF: Supports Profile S, T, G, M
- Milestone testing tool: Milestone XProtect Corporate 2019 R2
- GENETEC testing tool: Security Center Version 5.7SR1(5.7.529.12)

1.11 V3.140.0000000.2.R.231108

Release Date

November 22, 2023

New Features

- None.

Optimized Features

- Reduced the image noise for 8-series 4 MP dual-lens network cameras.

Fixed Bugs

- Fixed the issue that the calibration failed in the production line for 8-series 4 MP dual-lens network cameras.

Third-party Access

- ONVIF testing tool: V22.12
- ONVIF: Supports Profile S, T, G, M
- Milestone testing tool: Milestone XProtect Corporate 2019 R2
- GENETEC testing tool: Security Center Version 5.7SR1(5.7.529.12)

1.12 V3.120.0000000.41.R.231020

Release Date

November 2, 2023

New Features

- None.

Optimized Features

- None.

Fixed Bugs

- Fixed the issue of memory leak caused by enabled AI functions for series 5 full-color products.

Third-party Access

- ONVIF testing tool: V22.12
- ONVIF: Supports Profile S, T, G, M
- Milestone testing tool: Milestone XProtect Corporate 2019 R2
- GENETEC testing tool: Security Center Version 5.7SR1(5.7.529.12)

1.13 V3.120.0000000.38.R.231008

Release Date

October 17, 2023

New Features

- AcuPick is added for series 5 full-color products.

Optimized Features

- None.

Fixed Bugs

- None.

Third-party Access

- ONVIF testing tool: V22.12
- ONVIF: Supports Profile S, T, G, M
- Milestone testing tool: Milestone XProtect Corporate 2019 R2
- GENETEC testing tool: Security Center Version 5.7SR1(5.7.529.12)

1.14 V3.120.0000000.36.R.230828

Release Date

September 6, 2023

New Features

- 5G K1 bullet cameras support updating 4G and 5G module firmware update, Microcom and module log tools. The camera automatically goes online after you top up the SIM card.

Optimized Features

- Fixed the issue of blocks on face images for series 5 full-color products.

Fixed Bugs

- Fixed the issues of missing splicing files in the product line and incorrect port number for login without password in 4K Dual Image Splicing Camera.

Third-party Access

- ONVIF testing tool: V22.06
- ONVIF: Supports Profile S, T, G, M
- Milestone testing tool: Milestone XProtect Corporate 2019 R2
- GENETEC testing tool: Security Center Version 5.7SR1(5.7.529.12)

1.15 Software Environment

Category	Model	Version
NVR	NVR2X-I	2.6.01.02.16209 DH_NVR2XXX-I_Mul_V4.002.0000000.1.R.220211.zip
	NVR4X-4KS2	2.6.01.02.14935 DH_NVR4x-4KS2L_MultiLang_V4.001.0000001.2.R.211105.zip
	NVR5X-4KS2	2.6.01.02.13884 DH_NVR5XXX-4KS2_MultiLang_V4.001.0000007.1.R.210827.zip

Category	Model	Version
	NVR4X-EI	2.6.01.02.20345 DH_NVR4x-EI_MultiLang_V4.001.0000000.0.R.221124.zip
	NVR5X-EI	2.6.01.02.25079 DH_NVR5XXX-EI_MultiLang_V4.003.0000000.0.R.231229.zip
	NVR6X-XI	2.6.01.02.25087 DH_NVR6XXX-I_MultiLang_V4.000.0000000.5.R.231228.zip
DSS	DSS Pro	2.7.01.02.04703 General_DSS-Professional_Server_Win64_IS_V8.004.0000000.0.R.20240104.exe
	DSS Express	2.7.01.02.02822 General_DSS-Express_win32_IS_V8.000.0000004.0.R.20211119.exe
App	DMSS	Online versions.
Tool	SmartPlayer	2.8.02.01.01212 General_SmartPlayer-Win32_Eng_IS_V4.003.0000000.0.R.230519.zip
	ConfigTool	2.8.02.01.01334 General_ConfigTool_ChnEng_V5.001.0000004.0.R.20240126.zip
	SmartPSSLite	2.7.05.01.01987 General_SmartPSSLite_MultiLang_Win64_IS_V1.003.0000002.4.R.230330.zip

2 Update Guide

2.1 Introduction

This document provides multiple update methods for the IPCs. Users can update the IPCs to the latest version according to the update guide. The update methods include updating by ConfigTool and DMSS app, through local update package, and cloud update on the webpage.

2.2 Preparation

Before the update, please ensure that the following conditions are met.

- Update by ConfigTool: The device can work normally; the computer is installed with ConfigTool; the device is on the same network as the computer; the update package is ready.
- Update by local package: The device can work normally; the device is on the same network as the computer that is used to log in to the webpage; the update package is ready.
- Cloud update on the webpage: The device can work normally and is connected to Internet; the device is on the same network as the computer that is used to log in to the webpage.
- Update by DMSS app: The device can work normally; the mobile phone is installed with DMSS app; the device is added to DMSS app.



- Check whether the device model and program version are correct before the update.
- Decompress the compressed program package when updating by the ConfigTool and through the local package.
- In addition to the main package, there is the algorithm package (firmware.bin). When updating the system by ConfigTool and local package, update the main package first, restart the device, and then update the algorithm package. If you select cloud update, the algorithm package will be automatically updated.
- In addition to the main package, there is the FPGA program package. Update the main package first, and then update the FPGA program package after restarting the device.

2.3 Instructions

2.3.1 Updating by ConfigTool

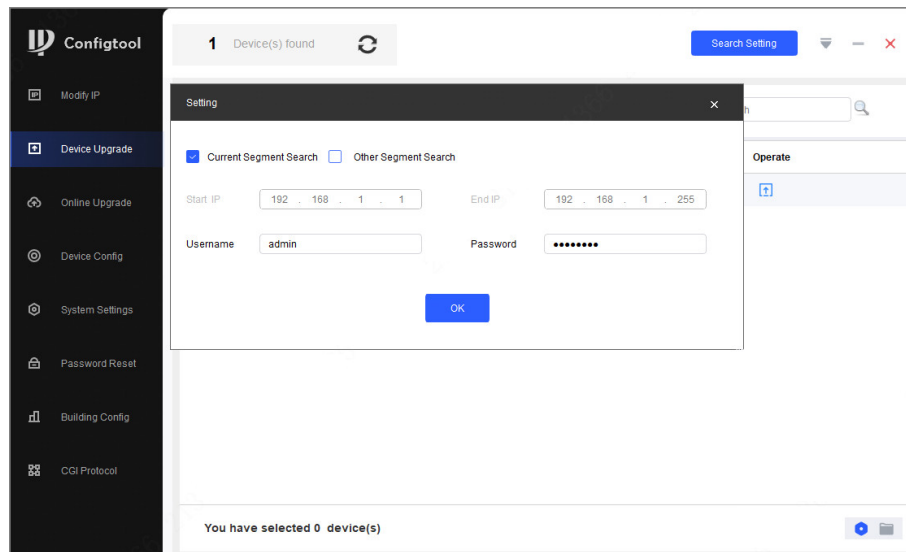
2.3.1.1 Updating One by One

Use this update method when you need to update a single device.

Procedure

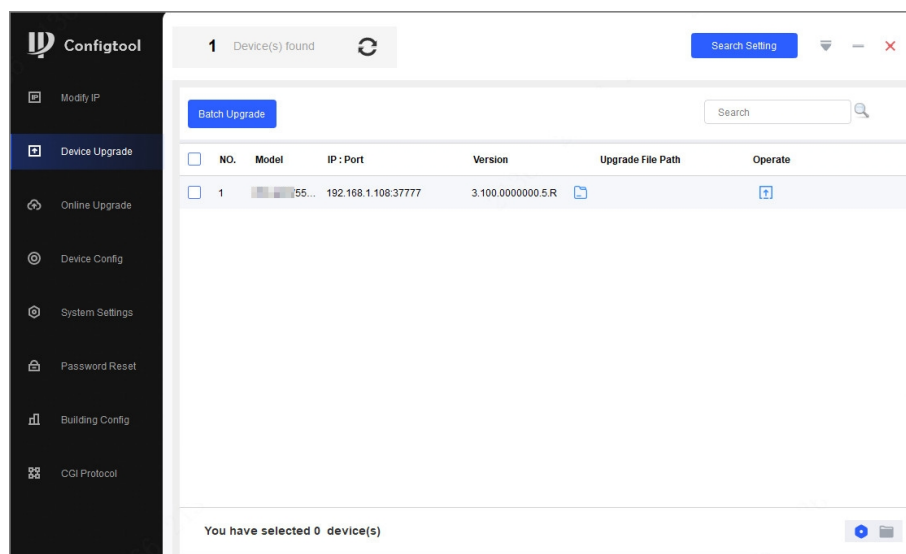
- Step 1 Open ConfigTool, and then select **Device Upgrade**.
- Step 2 Click **Search Setting** to set the search conditions.


Figure 2-1 Set search condition



Step 3 Select **Current Segment Search**, change the password to the IPC password, and then click **OK**.

Figure 2-2 View search result



Step 4 Click  next to the device to be updated, and then select the update file.

Step 5 Click  to start to update the system.

The device automatically restarts after the update is complete.



If the system update fails, check the prompt on the ConfigTool to see the reason.

2.3.1.2 Updating in Batches

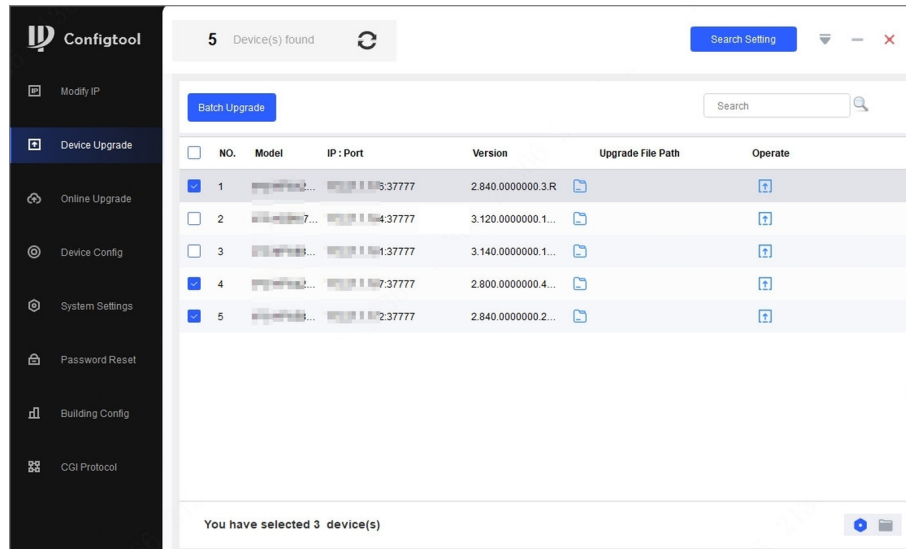
Use this method when you need to update multiple devices to the same software version.

Procedure

Step 1 Open ConfigTool, and then select **Device Upgrade**.

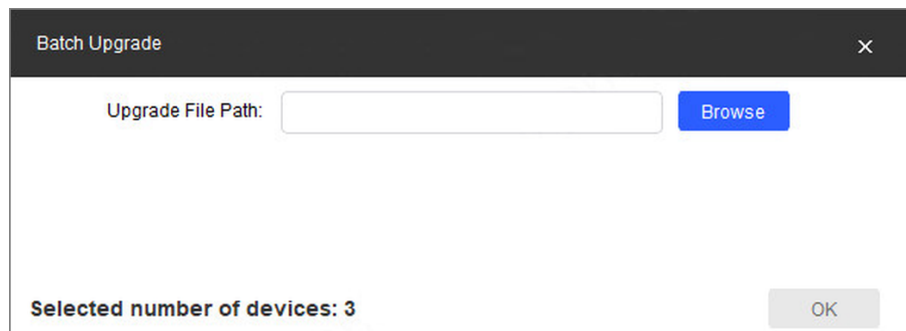
- Step 2 Click **Search Setting** to set the search conditions.
- Step 3 Select **Current Segment Search**, change the password to the IPC password, and then click **OK**.

Figure 2-3 View search result



- Step 4 Select the device to be updated, and then click **Batch Upgrade**.
- Step 5 Click **Browse** to select the update package.

Figure 2-4 Select update package



- Step 6 Click **OK** to start to update the system.
- The device automatically restarts after the update is complete.



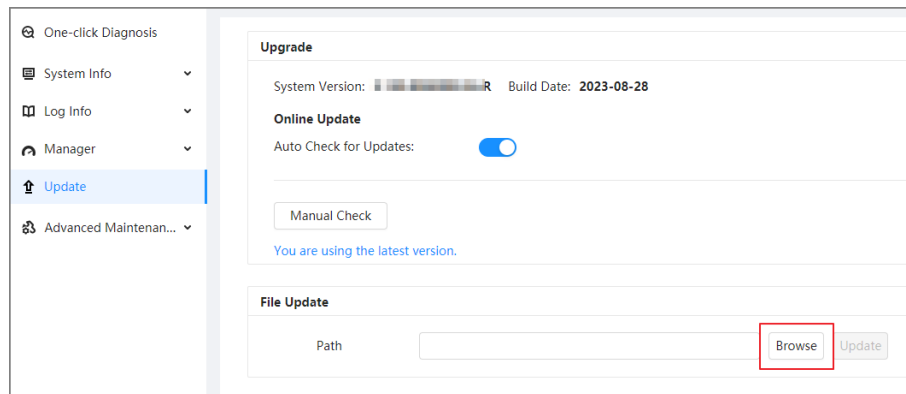
If the system update fails, check the prompt on the ConfigTool to see the reason.

2.3.2 Updating through the Webpage

Procedure

- Step 1 Log in to the webpage of the device.
- Step 2 Select **Settings** > **Maintenance Center** > **Upgrade** to enter the system update page.

Figure 2-5 System update



Step 3 Click **Browse**, select the update file, and then click **Update**.

Do not cut off the power supply during the update process. The device automatically restarts when the update is complete.

Step 4 After the restart, you are redirected to the login page for you to log in to the device again.

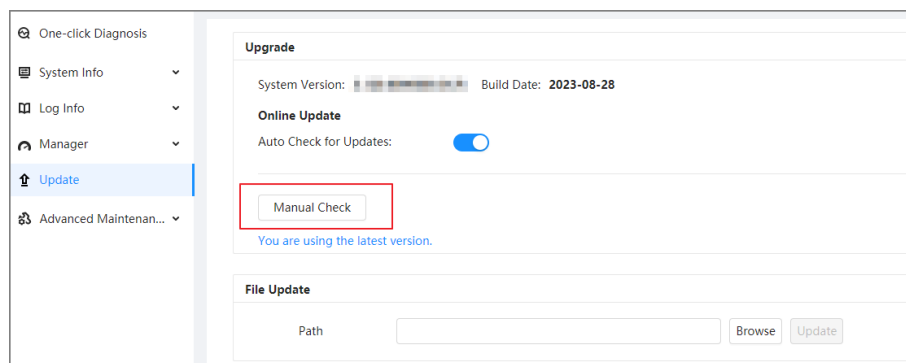
2.3.3 Cloud Update through the Webpage

Procedure

Step 1 Log in to the webpage of the device.

Step 2 Select **Settings** > **Maintenance Center** > **Upgrade** to enter the system update page.

Figure 2-6 System update



Step 3 Click **Manual Check**.

Select Auto-check, and when a new version is available, the device automatically detects it.

Step 4 If a new version is available, click **Update Now**. The system downloads the version file and starts the update process.

Step 5 After the restart, you are redirected to the login page for you to log in to the device again.

2.3.4 Cloud Update through DMSS

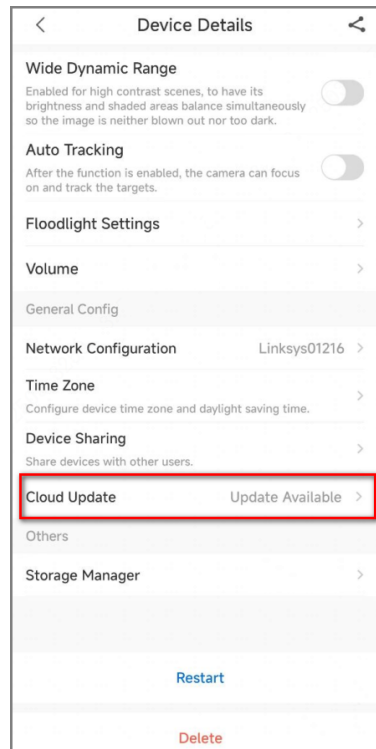
Procedure

Step 1 Open DMSS app.

Step 2 Select **Device Details**.

If it displays **Update Available** on **Cloud Update** area, then there is available new version for update.

Figure 2-7 Device details



- Step 3 Tap **Cloud Update** to go to the update page.
- Step 4 Confirm the **Current Version** and **Latest Version**, and then tap **Update**.
- Step 5 After being updated successfully, the device will restart.

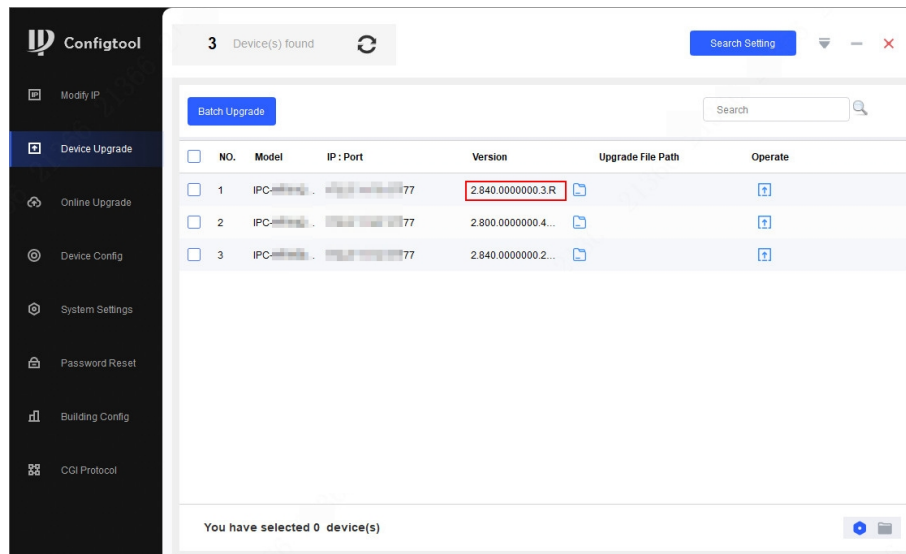
2.4 Checking for Update Success

2.4.1 Checking the Result of Update by ConfigTool

After the update is complete, wait until the device restarts. Click  to check the system version.

If the version is the same as the software version of the update package, it means the update is successful.

Figure 2-8 Check version information

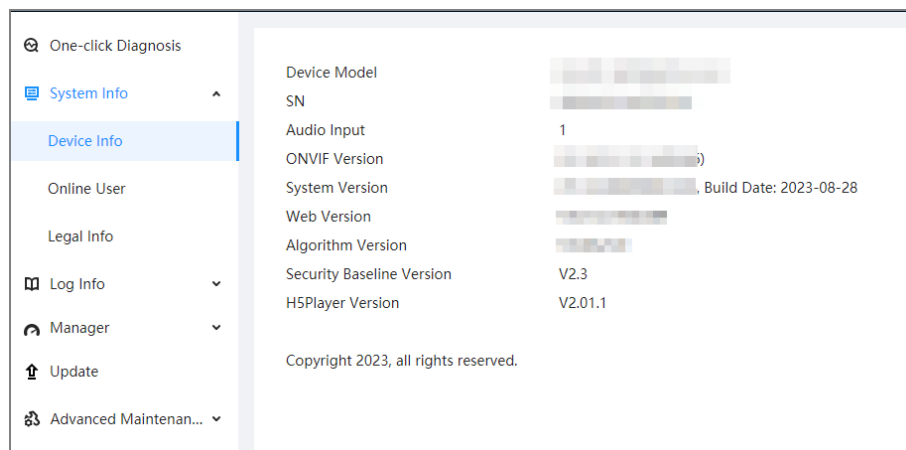


2.4.2 Checking the Result of Update through the Webpage

Procedure

- Step 1 Log in to the webpage of the device.
- Step 2 Select **Settings** > **Maintenance Center** > **System Info** > **Device Info** to check the update result.

Figure 2-9 Check update result

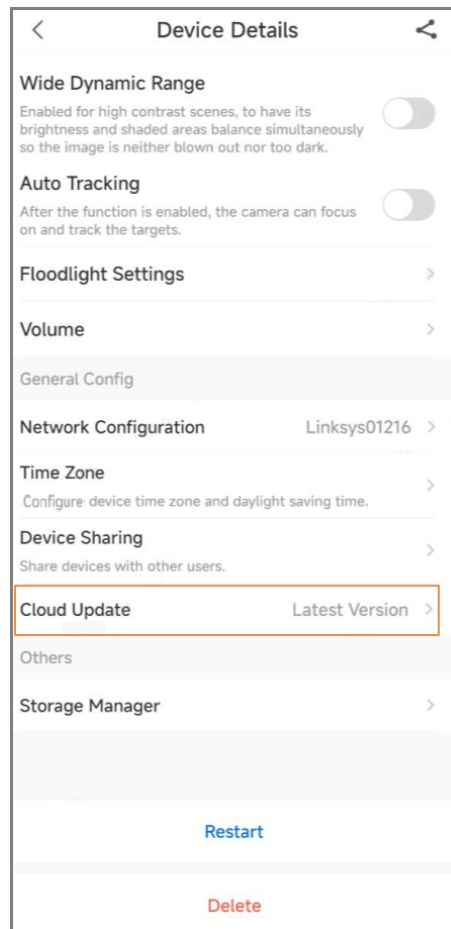


2.4.3 Checking the Result of Update through DMSS

Procedure

- Step 1 Open DMSS app.
- Step 2 Select **Device Details**.
- Step 3 Confirm that you have updated to the latest version.

Figure 2-10 Device details



ENABLING A SMARTER SOCIETY AND BETTER LIVING

ZHEJIANG DAHUA VISION TECHNOLOGY CO., LTD.

Address: No. 1399, Binxing Road, Binjiang District, Hangzhou, P. R. China | Website: www.dahuasecurity.com | Postcode: 310053

Email: dhoverseas@dhvisiontech.com | Tel: +86-571-87688888 28933188