

DHI-ARD2235

Dual-tech Detector



- Immune to animals that weigh up to 25 kg.
- Resists white light of up to 6,500 lux.
- Two-way digital temperature compensation.
- Features AI and dynamic threshold technology.
- Resistant to EMI and RFI interference.

System Overview

This device uses passive infrared and microwave detection technology to eliminate interference from changes in temperature and lighting, ensuring the accuracy of human motion detection.

Scene

Used in entrances and exits, such as doors, windows, balconies and elevators to protect against intrusions.

Technical Specification

Port

Alarm Output	1 × alarm output, NC/NO, 60 VDC, Max. 400 mA 1 × case tamper output, NC, 28 VDC, Max. 100 mA
--------------	---

Function

Indicator Light	Red, green and yellow indicator
-----------------	---------------------------------

Technical

Sensor	Dual-element low-noise pyroelectric infrared sensor and microwave sensor
Detection Mode	Passive Infrared Detection (PIR), microwave and intelligent review algorithm
Sensitivity	Adjustable sensitivity
Detection Range	Distance: 12 m (39.37 ft) Angle: 90°
Detection Speed	0.3 m/s–3 m/s (0.98 ft/s–9.84 ft/s)
Pet Immunity Level	≤25 kg (55.12 lb)
White Light Resistance Level	6,500 lux
Two-way Digital Temperature Compensation	Yes
AND/OR Technology	Yes
Dynamic Threshold Technology	Yes

Pulse Count	Yes, 1P or 2P
Operating Current	≤30 mA (12 VDC)
Alarm Current	≤25 mA

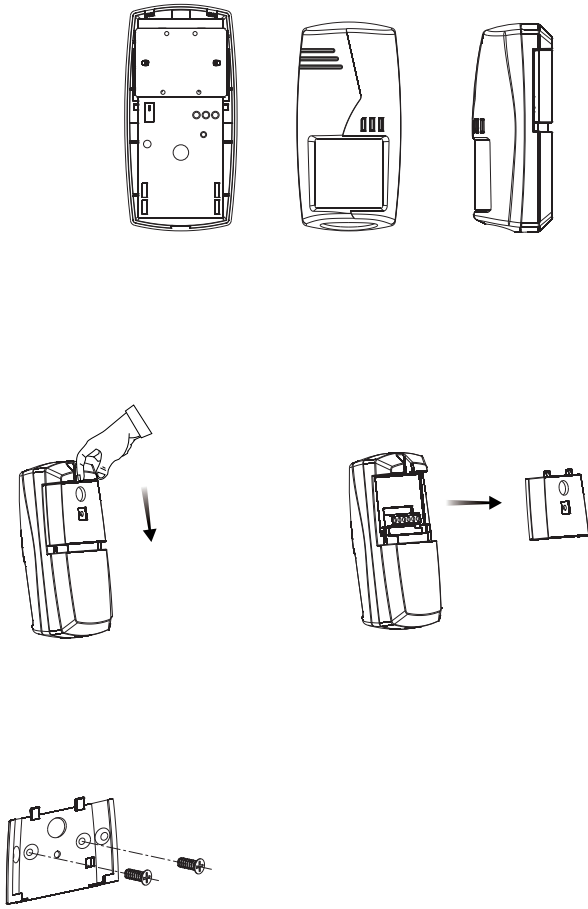
General

Power Supply	9–16VDC
Power Consumption	0.48 W (Max.)
Operating Temperature	–10 °C to +55 °C (+14 °F to +131 °F)
Operating Humidity	≤95% (RH)
Product Dimensions	60.0 mm × 46.0 mm × 120.0 mm (2.36" × 1.81" × 4.73") (L × W × H)
Net Weight	165.0 g (0.36 lb)
Gross Weight	176 g (0.39 lb)
Installation	Wall mount
Casing Material	ABS
Appearance Color	White
Certifications	CE
Anti-corrosion Level	Basic Protection
Storage Temperature	–10 °C to +55 °C (+14 °F to +131 °F)
Storage Humidity	≤95% (RH)
Packaging Dimensions	82.0 mm × 50.0 mm × 133.0 mm (3.23" × 1.97" × 5.24") (L × W × H)

Ordering Information

Type	Model	Description
Dual-tech Detector	DHI-ARD2235	Dual-tech Detector

Installation



Dimensions (mm[inch])

