

DH-PSDW81642ML-A360-D237

8x2MP Multi-Sensor Panoramic + PTZ WizMind Network Camera



Wiz Mind

- Panoramic: Eight 1/1.8" 2 Megapixel progressive scan CMOS
- PTZ: One 1/1.8" 2 Megapixel progressive scan CMOS
- Support 360-degree panoramic view
- Starlight+ technology
- support Smart H265+/H264+ encoding
- Day/Night (ICR); 3D NR; AWB; AGC; BLC
- IR distance up to 220 m
- Smart tracking
- Tripwire
- Intrusion



Launched by Dahua Technology, Dahua WizMind is a full portfolio of solutions composed of project-oriented products including IPC, NVR, PTZ, XVR, Thermal and software platform which adopts industry-leading deep learning algorithms. Focusing on customer's requirements, WizMind provides precise, reliable and comprehensive AI solutions for verticals.

Series Overview

Starlight panoramic HD network camera, with all-in-one design, provides a 360°panorama and region of interest details at the same time. The panoramic network combines 8 sensors working in tandem to realize 360°panoramic surveillance; all-in-one module and high-speed PTZ camera provides the function of quick position details. In addition, with video analytic algorithm and multi-target track algorithm, the camera can automatically or manually detect tripwire and intrusion of mutiple targets in detection area, output alarm signal, and then link PTZ for smart tracking. With these excellent features, the camera can meet higher security requirements.

Functions

True Day/Night

A day/night mechanical IR cut filter makes this camera ideal for applications with fluctuating lighting conditions, delivering color images during the day and automatically switching to monochrome as the scene darkens.

Starlight Technology

Featured with Dahua Starlight Technology, the camera is ideal for applications with challenging light conditions. Its low light performance delivers usable video with minimal ambient light. Even in extreme low light conditions, Starlight Technology is capable of delivering color images in nearly complete darkness.

Smart tracking

1. Panoramic channel supports manual position, frame selection zoom position.
2. Manual track.
3. Auto track after tripwire and intrusion are triggered.

Tripwire detection and intrusion detection

With advanced algorithm, the detection distance, and the accuracy rate and timely rate of linkage track are much improved.

Technical Specification					
Camera					
Image Sensor	Panoramic network camera: 1/1.8"CMOS PTZ camera: 1/1.8"CMOS				
Max. resolution	Panoramic network camera: 8192x1800 PTZ camera: 1920x 1080				
Scanning System	Progressive				
Electronic Shutter Speed	Panoramic network camera: 1/3 s-1/100000 s, manual or auto adjust PTZ Camera: 1/1 s-1/300000 s, manual or auto adjust				
Min. Illumination	Panoramic network camera: 0.001Lux(colour);0.0001Lux(black); PTZ camera: 0.001Lux(colour);0.0001Lux(black);0Lux(IR on)				
S/N Ratio	Panoramic network camera:51db PTZ camera:51.5db				
IR Distance	Panoramic network camera: — PTZ camera: ≥ 220 m (721.78t) (IR on)				
IR On/Off Control	Auto/Manual				
IR LEDs Number	Panoramic network camera: — PTZ camera: 7				
Lens					
Lens Type	Panoramic network camera:Fixed-focal PTZ camera:Motorized vari-focal				
Mount Type	Panoramic network camera:M16 PTZ camera: Core interface				
Focal Length	Panoramic network camera 2.8 mm PTZ camera: 5.62mm~208mm, 37x optical zoom				
Max. Aperture	Panoramic network camera: F1.6 PTZ camera: F1.4				
Field of View	Panoramic network camera:Horizontal: 360° Vertical: 80°~85° PTZ camera:Horizontal: Horizontal: 2.61°~59.61° Vertical: 1.48°~34.92° Diagonal: 3°~66.96°				
Iris Type	Panoramic network camera: Fixed aperture PTZ camera: Auto				
Close Focus Distance	Panoramic network camera: 0.2m(0.66ft) PTZ camera:0.1m~1m(0.33ft~3.28ft)				
DORI Distance		Detect	Observe	Reconize	Identify
	Panoramic network camera	29.0m (95.14ft)	11.6m (38.05ft)	5.8m (19.02ft)	2.9m (9.51ft)
	PTZ camera	1930.7m (6334.31ft)	772.27m (2533.69ft)	386.1m (1266.73)	193.1m (633.53ft)
Smart Event					
IVS	Intrusion, tripwire				
Video					
Video Compression	H.265; H.264; H.264H; H.264B; MJPEG				
Smart Codec	Smart H.264+ Smart H.265+				
Video Frame Rate	Panoramic network camera:Main stream(8192x1800@1~30fps),Sub Stream(2048x452@1~30fps),Third Stream(3840x832@~30fps) PTZ camera: Main stream(1920x1080@1~30fps),Sub Stream(704x480@1~30fps),Third Stream(1280x720@1~30fps)				
Stream Capability	3 Streams				
Resolution	Panoramic network camera: 8192x1800;7680x1680;5760x1264;4096x900;3840x832;2560x560;2048x452 PTZ camera: 1920 x 1080; 1280 x 960; 1280 x 720; 704 x 576; 704 x 480; 352 x 288; 352 x 240				
Bit Rate Control	Panoramic network camera: CBR/VBR PTZ camera:CBR/VBR				
Video Bit Rate	Panoramic network camera: H.264:112kbps ~37227Kb/S H.265:44kbps ~22546Kb/S PTZ camera: H.264:24kbps ~10752Kb/S H.265:9kbps ~6400Kb/S				
Day/Night	Auto (ICR)/Color/B/W				
BLC	Yes				
HLC	Yes				
WDR	Panoramic network camera:DWDR PTZ camera: WDR (120 dB)				
White Balance	Panoramic network camera:Auto/Natural/street lamp/outdoor/manual/regional Custom PTZ camera: Auto/indoor/outdoor/tracking/manual/sodium lamp/natural/street lamp				
Gain Control	Auto/Manual				
Noise Reduction	3D NR				
Motion Detection	Disable/Enable				
Region of Interest (RoI)	Yes (4 areas)				
Electronic Image stabilization(EIS)	Panoramic network camera: — PTZ camera: Yes				
Smart IR	Panoramic network camera: — PTZ camera: Yes (Adjusted by user.)				
Defog	Panoramic network camera: — PTZ camera: Yes				
Image Rotation	0°/180°(PTZ camera)				
Privacy masking	4 areas(Panoramic network camera);24 areas(PTZ camera)				
Audio					
Audio Compression	G.711Mu;G.711A;G.726				
Network					
Network	RJ-45 (10/100/1000 Base-T)				
Protocol	IPv4;IPv6;HTTP;HTTPS;TCP; UDP;ARP;RTP ; RTSP;RTCP; RTMP;SMTP;FTP;SFTP;DHCP;DNS;DDNS; QoS;UPnP;NTP;Multicast;ICMP;IGMP;NFS;SAMBA;P PoE;802.1x;SNMP				
Interoperability	ONVIF (Profile S/Profile G); CGI; Milestone;Genetec				
User/Host	20 (Total bandwidth: 1000 M)				
Edge Storage	FTP;SFTP; Micro SD card (support max. 256 G); Dahua Cloud; NAS				
Browser	Chrome 42 Firefox 52 IE7;IE8;IE9;IE11				
Management Software	EVS5XX,EVS7XX,NVR5X-I,NVR4X-4KS2 ,M70,IVS57X ,DSS Pro&DSS express				

Certification

Certification	CE-LVD: EN60950-1 CE-EMC: Electromagnetic Compatibility Directive 2014/30/EU FCC: 47 CFR FCC Part 15, Subpart B UL/CUL: UL60950-1 CAN/CSA C22.2 No.60950-1-07
---------------	------------------------------------------------------------------------------------------------------------------------------------------------------------------------

PTZ Dome

Pan Range	Pan: 0° to 360° endless Tilt: -12° to 90°, auto flip 180
Manual Control Speed	Pan: 240°/s Tilt: 120°/s
Remote Lens Reset	Yes
Preset	300
Tour	8 Tour (up to 32 preset per tour)
Pattern	5 patterns
Scan	5
Power-off Memory	Yes
Idle Motion	Preset/Pattern/Tour/Scan
Time Task	Yes
Three-dimensional Positioning	Yes
PTZ Limit	Yes
Position Display	Yes
Information Display	Yes
Time Display	Yes

Port

Optical Fiber	FC, single mode, single fiber
Audio Input	2 channels (terminal)
Alarm Output	2 channels (terminal)
Alarm Input	7 channels in: 5mA 3V-5V DC
Alarm Output	3 channels out: 1,000mA 30V DC/500mA 50V DC

Power

Power Supply	DC36V
Power Consumption	MAX:74W

Environment

Operating Temperature	-40°C to +70°C (-104°F to +158°F)
Operating Humidity	≤95%
Storage Temperature	-40°C to +70°C (-104°F to +158°F)/Less than 95% RH
Ingress Protection	IP66;IK10(optional)

Structure

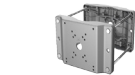
Enclosure	Metal + Plastic
Dimensions	Φ383 mm × 389.8 mm (Φ1256.56 ft × 1279.8 ft)
Net Weight	14.7 kg (32.40 lb)

Ordering Information

Type	Part Number	Description
Panoramic + PTZ camera	DH-PSDW81642ML-A360-D237	8 × 2MP Multi-Sensor Panoramic + PTZ WizMind Network Camera
	DH-PSDW8842ML-A180-D237	4 × 2MP Multi-Sensor Panoramic + PTZ WizMind Network Camera
Accessories	PFB710C-SG	Hang-mounted bracket
	PFB710W-SG	Wall-mounted bracket
	DH-PFA153-SG PFB710W-SG	Pole-mounted bracket

Accessories

Optional:



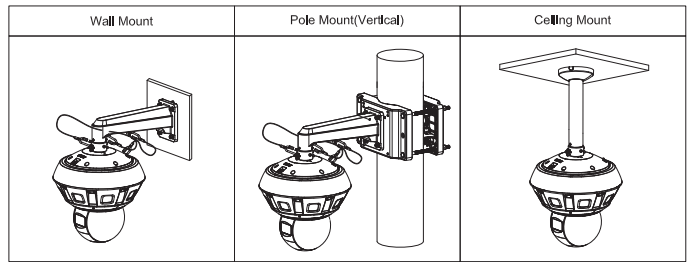
DH-PFA153-SG
Pole-mounted bracket



PFB710C-SG
Hang-mounted bracket



PFB710W-SG
Wall-mounted /Pole-mounted bracket



Dimensions (mm[inch])

