

Dahua CEE & Nordic
Tel: +48 223957400
Email: dh.cen@dahuatech.com

Dahua Technology Poland SP.ZO.O
Tel: +48 223957400
Email: biuro.pl@dahuatech.com

Dahua Technology SRB D.O.O
Tel: +38 1 (11) 4429999
Email: dh.srb@dahuatech.com

Dahua Technology Denmark Aps
Email: Nordic.ne@dahuatech.com

Dahua Technology Hungary LTD
Tel: +36 17899852
Email: sales.hu@dahuatech.com

Dahua Technology Bulgaria EOOD
Tel: +35929950013
Support: support.bg@dahuatech.com


Dahua Technology SRL
Email: markeng.ro@dahuatech.com

Dahua Technology Czech.s.r.o.
Tel: +420 225 986 001
Email: admin.cz@dahuatech.com

Dahua Guvenlik Teknolojileri Sanayi ve Ticaret A.S.
Email: sales.tr@dahuatech.com


Dahua Technology Middle East FZE
Email: info.me@dahuatech.com

Dahua Technology Mexico S.A. DE C.V.
Tel: +52 55 67231936
Email: sales.mx@dahuatech.com
Support: support.mx@dahuatech.com

Dahua Technology Colombia S.A.S.
Tel: +57 6013106176
Email: markeng.co@dahuatech.com
Support: support.co@dahuatech.com

Dahua Technology Perú S.A.C
Tel: +511 500-8555
Email: sales.pe@dahuatech.com
Support: support.pe@dahuatech.com

Dahua Technology Chile SpA
Tel: +56 232705421
Email: sales.cl@dahuatech.com
Support: support.chile@dahuatech.com

Dahua Technology Argenna S.A.
Email: project.ar@dahuatech.com

Dahua Technology Panama S.A.
Email: sales.pa@dahuatech.com
Support: support.pa@dahuatech.com

Dahua Brazil
Tel: +55 11 32511871
Suporte Técnico: suporte.br@dahuatech.com
Vendas: comercial.br@dahuatech.com

Dahua Technology USA Inc.
Tel: +1 (949) 679-7777
Email: sales.usa@dahuatech.com
Support: support.usa@dahuatech.com

Dahua Technology Canada
Tel: +1 877-606-1590
Email: sales.usa@dahuatech.com
Support: support.usa@dahuatech.com

Dahua Europe BV
Tel: +31 (0) 85-0715700
Email: sales.benelux@dahuatech.com
Support: support.benelux@dahuatech.com

Dahua Iberia, S.L.
Tel: +34 917649862
Email: sales.iberia@dahuatech.com
Support: support.iberia@dahuatech.com

Dahua Technology Italy s.r.l.
Tel: +39 02 99912900
Email: info.italy@dahuatech.com
Support: support.italy@dahuatech.com

Dahua Technology GmbH
Tel: +49 211 2054 4120
Email: sales.de@dahuatech.com
Support: support.de@dahuatech.com

Dahua Technology France
Tel: +33 (0) 1 48 53 70 53
Email: sales.france@dahuatech.com
Support: support.france@dahuatech.com

Dahua Singapore
Tel: +65 65380952
Email: sales.sg@dahuatech.com

Dahua Malaysia
Tel: +60376620732
Email: sales.my@dahuatech.com

Dahua Indonesia
Tel: +6227893330
Email: sales.id@dahuatech.com
Support: support.id@dahuatech.com

Dahua Australia
Tel: +61 290306000
Email: sales.oc@dahuatech.com

Dahua New Zealand
Tel: +64 09 2823467
Technical Hotline: 0800 854 857
Email: Dahua_NZ@dahuatech.com

Dahua Philippines
Email: Dahua_Philippines@dahuatech.com

Dahua Russia (Dahua Technology Rus LLC.)
Tel: 8 (800) 707-67-66
Email: info.ru@dahuatech.com


Dahua Kazakhstan (Dahua Technology Kazakhstan LLP)
Tel: +7 727 3110838
Email: sales.kz@dahuatech.com

Dahua Uzbekistan (OOO "Dahua Vision")
Tel: +998 781488666

Dahua Technology Ukraine Office
Tel: +380674011526
Email: dahua.ukraine@dahuatech.com

Dahua Technology UK Limited
Tel: +44 (0) 1628 613 500
Email: sales.uk@dahuatech.com
Support: support.uk@dahuatech.com

Dahua Technology South Africa (Pty) Ltd | Head Office
Office Line: +27 10 593 3242
WhatsApp Business Help-Line: +27 84 072 9260
Toll-Free Help-Line: 080 099 0064
Email: sales.za@dahuatech.com
Support: support.za@dahuatech.com

Dahua Technology Nigeria Representave Ltd.
Email: Westafrica@dahuatech.com

Dahua Thailand
Tel: +66 2541 5188
Email: info.th@dahuatech.com

Dahua Republic of Korea
Tel: +82-2-6486-8889
Email: sales.kr@dahuatech.com

Dahua Vietnam
Tel: +84 24 3202 6616
Email: DH_VIET@dahuatech.com

Dahua Technology Japan
Tel: +81-3-6661-6818
Fax: +81-3-6661-6857
Email: Dahua_Japan@dahuatech.com

Dahua Technology India Private Limited
Tel: +91 124 4569100
Email: sales.india@dahuatech.com

RETAIL LOSS PREVENTION

PRODUCTS AND SOLUTIONS



* Design and specifications are subject to change without notice.

Ver. 1, Jan. 2023

Zhejiang Huajian Technology Co., Ltd.

Add: 3rd Floor, Block C, Building 1, No. 2200 Nanchuan Road, Changhe Subdistrict, Binjiang District, Hangzhou, Zhejiang Province
Website: www.waythcan.com



WAYTHCAN Website



DAHUA Website

CONTENTS

01 Retail Loss Prevention Solution

- Background
- Solution Overview
- Solution Introduction
- Solution Topology
- Waythcan iSmart Service (WISS)

About Us

Company
Introduction

02 EAS Systems

- Features
- AM System
- RF System

03 EAS Labels & Tags

- AM Labels
- RF Labels
- Alarming Tags
- Safer
- Function Tags
- Hard Tags
- Accessories

04 Other Products

- Detacher
- Deactivator

ABOUT US

Company Introduction

Zhejiang Huajian Technology Co., Ltd. (Huajian Technology) is a world-leading Security Screening smart IoT solution and service provider. Based on technological innovations, Huajian Technology offers end-to-end security solutions, systems, and services to create value for professionals and consumers.

The company continues to explore emerging opportunities based on IoT technologies and has already established businesses in security screening, retail loss prevention systems, cloud service technologies, and more.

Zhejiang Huajian Technology Co., Ltd. (Huajian Technology), with its professional deep-learning algorithms and Image and Signal Processing Technology, provides a portfolio of solutions composed of project-oriented products, including WTMD, Security Screening systems and software platforms; delivering precise, reliable and comprehensive AI solutions to verticals, including government, retail, energy, finance and transportation. Huajian technology is the waythcan trademark owner.

Waythcan has experience in wireless signal processing, including software-defined radios and beamforming. These can improve wireless detection and resistance to interference and fading. Advanced RF technologies are used in EAS, IoT (Internet of Things), and millimeter wave systems.

Advanced RF Technology •

Waythcan combines deep learning algorithms with metal detection technology to help users discern metallic materials with highly accurate metal positioning and alarming.

• Advanced Metal Detector

Applications

AI X-ray Image Recognize •

Powered by an AI chip and deep learning algorithm, Waythcan provides comprehensive human-oriented solutions, making it possible to quickly and accurately act on what matters to you. In addition, it provides an effective AI overlay to locate prohibited objects and various prohibited-object data for business analysis.

• Waythcan Ecosystem

Waythcan products are compatible with major third-party technology partners. The Waythcan Ecosystem provides sufficient API for our technology partners.

Background

- Managing a retail business is always full of challenges. Security and loss prevention are the key concerns of all management teams. Losses in retail sectors amount to millions every day.
- The leading causes are shoplifting and internal theft, which are costly and preventable. Effective loss management strategies can help identify and address the root causes of these losses and prevent them from occurring in the future. This can involve a combination of security technologies, such as surveillance cameras and Electronic Article Surveillance (EAS) systems, as well as trained personnel responsible for managing and investigating losses.
- Implementing effective loss management strategies can help reduce the financial impact of losses on a retail business and improve customer satisfaction and employee morale.

Challenges

Rampant Shoplifting

No real-time alarms when unpaid products are removed from the premises.

No active deterrents or warnings to potential perpetrators.

Balance security measures with customer experience

Open-shelf products require new methods against theft without negatively impacting the customer experience.

To reduce changes to the customer experience.

Expensive Loss-Prevention Management

Multiple products may require different loss-prevention sensitivity and security.

Maintenance requirements and operational costs add up.

Poor Management Efficiency

Management is unable to oversee multiple locations or maintain relevant BI reports effectively.

Solution Overview

- The Smart Retail Loss Prevention Solution is committed to providing powerful, efficient, cost-effective solutions to protect your property. Its advanced Electronic Article Surveillance (EAS) systems, Waythcan iSmart Service (WISS) system, and AI technology loaded to the video surveillance system provide more proactive loss prevention methods, such as thief detection and movement recording. This system ensures a safer, more secure environment for your staff and customers.

Solution Details

Preventing Shoplifting and Theft

Real-time shoplifting alarms activate when products are taken out of the store.

EAS devices, as warning signs, inform potential thieves that they are being watched.

Balancing Security Measures with Customer Experience

EAS system uses wireless detection technology to protect open-shelf products.

EAS tags/Labels are designed to be quickly deactivated or decoded at checkout without affecting the speed of the transaction.

Managing Loss Prevention on a Budget

EAS tags are designed to provide greater protection for high-value products.

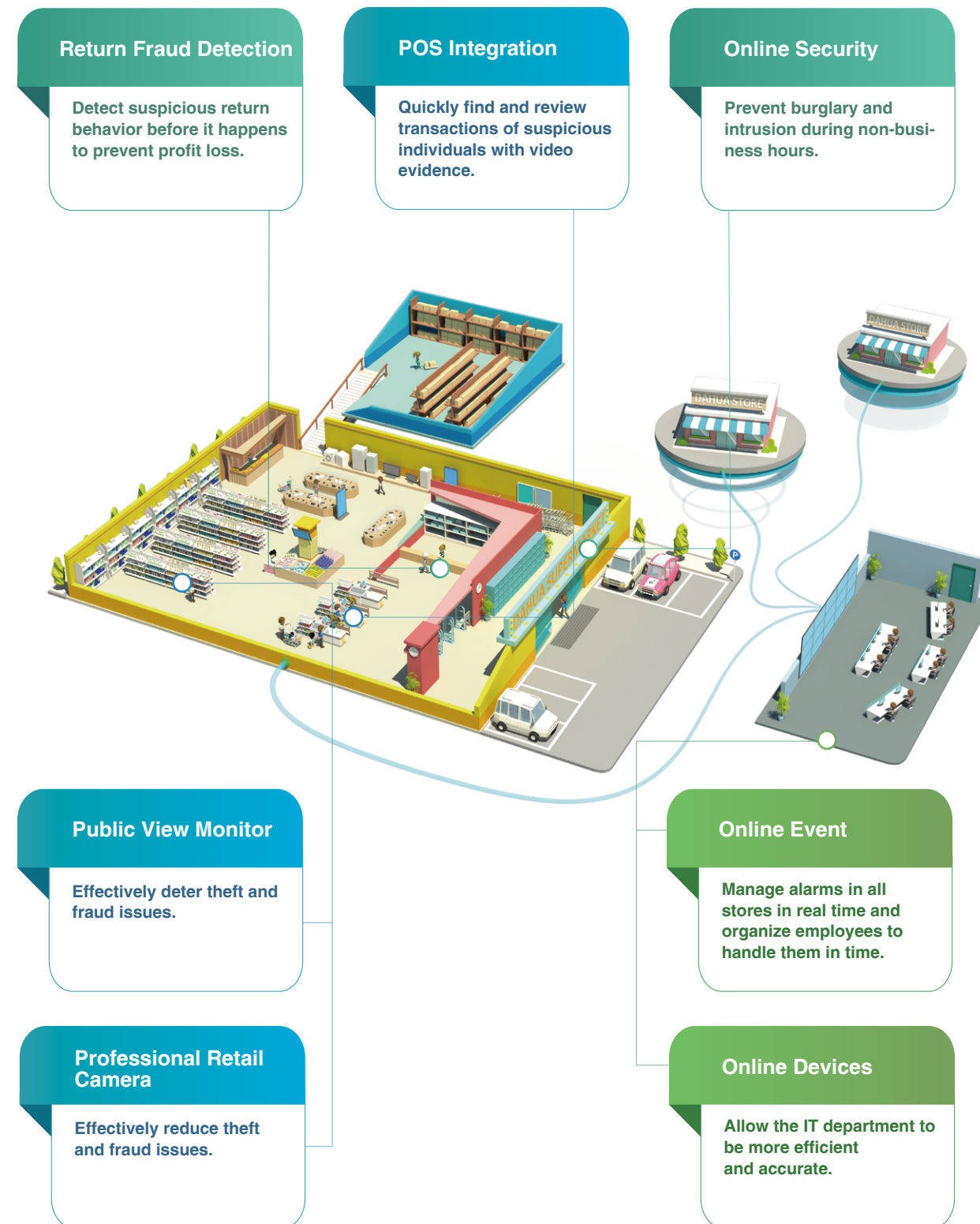
Remote maintenance: technicians can maintain devices remotely on WISS, reducing on-site visits.

Improving Management Efficiency

Admin can manage multiple stores or multiple regions of stores online by WISS.

WISS allows users to generate multiple BI reports (Optional).

Solution Introduction



Functions



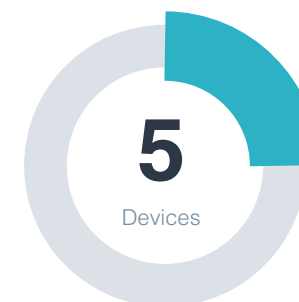
EAS Alarm

The system consists of EAS tags attached to merchandise and an EAS antenna placed near store exits. When a customer attempts to leave the store with an unpaid item, the EAS antenna detects the tag and triggers the EAS alarm, alerting store personnel and deterring the potential thief.

Online Events

An event is triggered when an active EAS tag is too close to the antenna. Details of the event (including time and location) can be recorded and stored in a database. Retail managers and loss-prevention teams can access and search this information online. Thus, allowing them to review and analyze the data, identify potential vulnerabilities, and take steps to improve store safety and security measures.

Alarm statistics

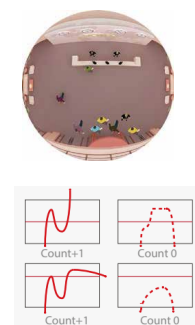


Online Devices

Managing device settings and statistics over the internet can be done through WISS, which allows you to access the device's settings and change them remotely. This can be useful for various purposes, such as troubleshooting issues with the device, updating its software, or changing its behavior to better suit your needs.

People Counting

People Counting can track and process moving human bodies to realize accurate statistics of people entering, leaving, and currently within the monitored area. This intelligent function offers customers valuable data for business report analysis, providing statistics with up to 98% counting accuracy.



Solution Topology



Waythcan iSmart Service (WISS)



Device Health Management

- Provide customers with device health management service when managing their sites. Should an error occur, receive an immediate notification on the WISS web.
- The system will also help troubleshoot quickly by giving possible solutions to every issue.

Remote Configuration

- You can do all of the configurations remotely through the WISS web portal.
- Add and configure various EAS devices to the platform.

Firmware Updates

- Supports OTA updates to allow remote firmware updates.

Device Permissions

- Allows you to manage different device permissions by organizations.

Features

Superior Detection Distance



- EAS antennas, commonly used in retail stores, prevent theft by detecting the presence of tags or labels attached to items being carried out of the store.
- The EAS antenna's superior detection distance is determined by the sensitivity of the antenna and the conditions in which the detection is taking place. Factors include the distance between the antenna and the tag, the type of tag being used, and any interference that may be present.

Product Model	Detection Distance of Labels	Detection Distance of Tags
ISC-EAA2	1.8 – 2.0 m	2.0 – 2.4 m
ISC-EAA8	1.8 – 2.0 m	2.0 – 2.4 m
ISC-EAR6	1.6 m	1.8 m
ISC-EAR8000	1.4 m	1.8 m

Excellent Anti-interference



- The device has a strong ability to resist interference. It has multiple sensitivity adjustment methods that can effectively counteract environmental noise that may affect the device's performance.
- The device has a solid ability to process signals. It uses unique filtering algorithms for receiving signals, ensuring accurate identification of tags/labels with a very low rate of false positives.

Convenient Configuration



- The device can be easily configured using various methods.
- It supports local screen, device web, and cloud-based configurations via WISS.
- Users can easily set up and manage their devices without technical expertise or specialized tools. The main goal of such a configuration system is to make it as easy as possible for users to configure their devices and get them up and running quickly and efficiently.

Auto/Manual Phase Sync



- EAS AM Antenna Support Auto/manual phase sync. Phase sync can sync the transmission timing of the device with other EAS systems, avoiding false alarms due to timing inconsistencies.
- For example, false alarms will be triggered when the signal-receiving timing of the device is the same as the transmission timing of another device within the environment. Therefore, you'll need to sync the phase of the device.

Networking



- EAS Network version device supports RJ45 network connection.
- Supports TCP/IP, HTTP protocol.
- Build-in web server, supports device web client.
- Supports the device connection to DSS Pro network platforms, WISS cloud services & remote configuration, and Configtool firmware upgrade.
- Supports network SDK for third-party platform integration.
- Optional WIFI (To Be Release)

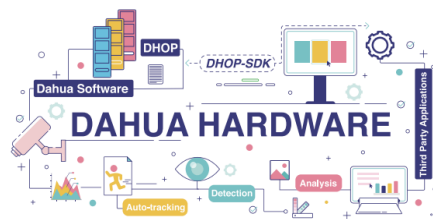
Human Safety



Our devices abide by the relevant Community harmonization directives and/or legislations:

- Radio Equipment Directive (2014/53/EU)
- Electromagnetic Compatibility Directive (2014/30/EU)
- Low Voltage Directive (LVD) 2014/35/EU
- Safe for the human body, pacemakers, and pregnant women; won't erase, alter, or damage magnetic storage media, including credit cards, computer floppy disks, tapes, or ICs.

Ecosystem



Waythcan products are compatible with major third-party technology partners. The Waythcan Ecosystem provides sufficient API for our technology partners.

Sufficient API

- The sufficient API provided by Waythcan allows any technology partners to communicate with EAS products.
- Strong customer support and a complete SDK demo and API document are available on our website.



Cybersecurity



- Protects network security and prevents privacy disclosure.
- Trusted Upgrade, Trusted Boot & Trusted Execution, Anti-tampering, Anti-virus Installation.
- Match the defense strategies according to the scene; Proactive defense against cyber attacks.
- Real-time detection of abnormal behaviors; Records the event and notifies users in time.

AM system



Ultra Network EAS AM Antenna

Built-in 1.3 inch OLED display with convenient configuration

Auto/manual adjust phase to effectively handle different kinds of interference

CCTV monitoring linkage

Supports network

Supports web interface

Supports remote configuration

Supports firmware upgrade

Product Model	DHI-ISC-EAA8-C101-P DHI-ISC-EAA8-C108-P Ultra Network EAS AM Antenna (Primary, 220V)	DHI-ISC-EAA8-C111-P DHI-ISC-EAA8-C118-P Ultra Network EAS AM Antenna (Primary, 110V)	DHI-ISC-EAA8-C101-R Ultra Network EAS AM Antenna (Replica)
Frequency	58 KHz		
Detect Tag	2.0-2.4 m		
Detect Label	1.8-2.0 m		
Antenna Body Material	Acrylic		
Bottom Shell Material	ABS		
CCTV Port	1 Port per antenna		
Network	Yes, RJ45	Yes, RJ45	NA
Supporting Software	DSS Pro, Configtool,WISS (C108)	DSS Pro, Configtool,WISS (C118)	NA
Input Voltage	220 – 240 VAC @ 50 Hz / 60 Hz	220 – 240 VAC @ 50 Hz / 60 Hz	NA
Max Power Consumption	25 W	25 W	23 W
Dimensions& Weight	1521 mm × 360 mm × 134 mm, 19 kg		1521 mm × 360 mm × 134 mm, 16 kg
Packaging & Weight	1665 mm × 460 mm × 210 mm, 21 kg		1665 mm × 460 mm × 210 mm, 18.5 kg
Operating Temperature	0 °C – 45 °C		
Certification	CE LVD, CE EMC, CE RED, FCC, ROHS		



● Lite Network EAS AM Antenna

Built-in 1.3 inch OLED display with convenient configuration

Auto/manual adjust phase to effectively handle different kinds of interference

CCTV monitoring linkage

*Supports network

*Supports web interface

*Supports remote configuration

*Supports firmware upgrade

Product Model	DHI-ISC-EAA2-C101-P DHI-ISC-EAA2-C108-P Lite Network EAS AM Antenna (Primary, 220V)	DHI-ISC-EAA2-C111-P DHI-ISC-EAA2-C118-P Lite Network EAS AM Antenna (Primary, 110V)	DHI-ISC-EAA2-C001-P Lite EAS AM Antenna (Primary, 220V)	DHI-ISC-EAA2-C011-P Lite EAS AM Antenna (Primary, 110V)	DHI-ISC-EAA2-C001-R Lite EAS AM Antenna (Replica)
Frequency	58 KHz				
Detect Tag	2.0-2.4 m				
Detect Label	1.8-2.0 m				
Antenna Body Material	Acrylic				
Bottom Shell Material	ABS				
CCTV Port	1 Port per antenna				
Network	Yes, RJ45	Yes, RJ45	NA	NA	NA
Supporting Software	DSS Pro, Configtool, WISS (C108)	DSS Pro, Configtool, WISS (C118)	NA	25 W	23 W
Input Voltage	220 – 240 VAC @ 50 Hz / 60 Hz	100-130 VAC @ 50 Hz / 60 Hz	220 – 240 VAC @ 50 Hz / 60 Hz	100-130 VAC @ 50 Hz / 60 Hz	24 VAC @ 50 Hz / 60 Hz
Max Power Consumption	25 W	25 W	25 W	25 W	23 W
Dimensions& Weight	1500 mm × 400 mm × 120 mm, 7 kg				1500 mm × 400 mm × 120 mm, 5 kg
Packaging & Weight	1590 mm × 490 mm × 200 mm, 8.5 kg				1590 mm × 490 mm × 200 mm, 7 kg
Operating Temperature	0 °C – 45 °C				
Certification	CE LVD, CE EMC, CE RED, FCC, ROHS				

*Only for Network Verrsion

➤ RF system



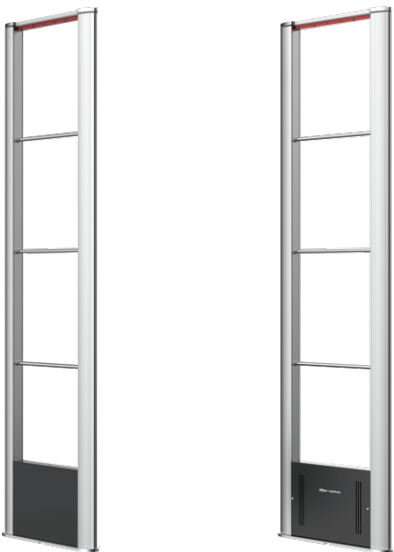
● Ultra EAS RF Antenna

High-quality acrylic material, simple and beautiful appearance

High detection rate, low false alarm rate

CCTV monitoring linkage

Product Model	DHI-ISC-EAR8000-R Ultra EAS RF Antenna (Receiver)	DHI-ISC-EAR8000-T Ultra EAS RF Antenna (Transmitter)	DHI-ISC-EAR8000-S Ultra EAS RF Antenna (Mono)
Frequency	8.2 MHz	8.2 MHz	8.2 MHz
Detect Tag	1.4-1.8 m	1.4-1.8 m	1.4-1.8 m
Detect Label	1.2-1.4 m	1.2-1.4 m	1.2-1.4 m
Antenna Body Material	Acrylic	Acrylic	Acrylic
Bottom Shell Material	ABS	ABS	ABS
CCTV Port	NA	1 Port per antenna	1 Port per antenna
Network	NA	NA	NA
Input Voltage	24 VDC	100 – 240 VAC @ 50 Hz / 60 Hz	100 – 240 VAC @ 50 Hz / 60 Hz
Power Consumption	36 W	36 W	36 W
Dimensions& Weight	1580 mm × 380 mm × 140 mm, 18 kg	1580 mm × 380 mm × 140 mm, 18 kg	1580 mm × 380 mm × 140 mm, 18 Kg
Packaging & Weight	1640 mm × 488 mm × 145 mm, 22 kg	1640 mm × 488 mm × 145 mm, 22 kg	1640 mm×488 mm×145 mm, 22 kg
Operating Temperature	-5 °C – 50 °C	-5 °C – 50 °C	-5 °C – 50 °C
Certification	CE EMC, CE LVD, ROHS, FCC		



Pro Network EAS RF Antenna

- High-quality acrylic material, simple and beautiful appearance
- High detection rate, low false alarm rate
- CCTV monitoring linkage
- Support network
- Supports Web interface
- Support Remote configuration

Product Model	DHI-HSC-EAR6-C101-G02 DHI-HSC-EAR6-C108-G02 Pro Network EAS RF Antenna Kit (P+R)
Frequency	8.2 MHz
Detect Tag	1.8 m
Detect Label	1.6 m
Antenna Body Material	Aluminum alloy
Bottom Shell Material	ABS
CCTV Port	1 Port per antenna
Network	Yes, RJ45
Supporting Software	DSS Pro, Configtool, WISS(C108)
Input Voltage	100 – 240 VAC @ 50 Hz / 60 Hz
Power Consumption	15 W
Dimensions& Weight	1543 mm × 427 mm × 65 mm, 10 kg
Packaging & Weight	1650 mm × 480 mm × 240 mm, 12 kg
Operating Temperature	0 °C – 30 °C
Certification	CE EMC, CE LVD, CE RED, ROHS, FCC




Ultra EAS RF Antenna

- Simple and beautiful appearance
- High detection rate, low false alarm rate
- CCTV monitoring linkage
- Low power consumption, environmentally friendly and energy-efficient

Product Model	DHI-HSC-EAR6-B001-G02 Pro EAS RF Antenna Kit (P+R)
Frequency	8.2 MHz
Detect Tag	1.4-1.8 m
Detect Label	1.2-1.4 m
Antenna Body Material	Aluminum alloy
Bottom Shell Material	ABS
CCTV Port	1 Port per antenna
Network	NA
Input Voltage	100 – 240 VAC @ 50 Hz / 60 Hz
Power Consumption	15 W
Dimensions& Weight	1670 mm × 420 mm × 80 mm, 15 kg
Packaging & Weight	1740 mm × 495 mm × 220 mm, 16.5 kg
Operating Temperature	0 °C – 30 °C
Certification	CE LVD, FCC, ROHS


AM Labels



AM Label
DHI-ISC-ETA1-R001S / DHI-ISC-ETA1-R001S-B

Frequency: 58KHz
Color: Barcode/White
Material: PET


Dimensions: 45 x11x1.6mm
Packaging Capability: 5000 per
boxes, 4 boxes per carton
Packaging & Weight: 422 mm x
295 mm x 235 mm, 11Kg



AM Label
DHI-ISC-ETA1-R001 / DHI-ISC-ETA1-R001-B

Frequency: 58KHz
Color: Barcode/White
Material: PET


Dimensions: 45x11x1.6mm
Packaging Capability: 5000 per
boxes, 4 boxes per carton
Packaging & Weight: 422 mm x
295 mm x235 mm, 11Kg



AM Label
DHI-ISC-ETA1-R001C / DHI-ISC-ETA1-R001C-B

Frequency: 58KHz
Color: Barcode/White
Material: PET


Dimensions: 45x11x1.6mm
Packaging Capability: 5000 per
boxes, 4 boxes per carton
Packaging & Weight: 425 mm x
295 mm x 205 mm, 12.5Kg



AM Label
DHI-ISC-ETA1-R002C / DHI-ISC-ETA1-R002C-B

Frequency: 58KHz
Color: Barcode/Red
Material: PET


Dimensions: 40x10x1.44mm
Packaging Capability: 5000 per
boxes, 4 boxes per carton
Packaging & Weight: 420 mm x
290 mm x 230 mm, 11Kg



AM Label
DHI-ISC-ETA1-R003C-B

Frequency: 58KHz
Color: Black
Material: PET

Dimensions: 40x10x1.44mm
Packaging Capability: 20,000 pcs
per carton
Packaging & Weight: 420 mm x
290 mm x 230 mm, 11Kg




Waterproof AM Label
DHI-ISC-ETA1012

Waterproof Label
Frequency: 58KHz
Color: Barcode
Material: Polystyrene

Dimensions: 49x14x2mm
Packaging Capability: 2500 per
boxes, 4 boxes per carton
Packaging & Weight: 380 mm x
290 mm x 250 mm, 9Kg


RF Labels



RF Label
DHI-ISC-ETR1-3030

Frequency: 8.2MHz
Color: Barcode
Material: Copper Plate Paper


Dimensions: 30x30 mm
Packaging Capability: 1000 per
rolls, 20 rolls per carton
Packaging & Weight: 270 mm x
270 mm x 190 mm, 7Kg



RF Label
DHI-ISC-ETR1-3040

Frequency: 8.2MHz
Color: Barcode
Material: Copper Plate Paper


Dimensions: 30x40mm
Packaging Capability: 1000 per
rolls, 20 rolls per carton
Packaging & Weight: 270 mm x
270 mm x 230 mm, 9Kg



RF Label
DHI-ISC-ETR1-4040

Frequency: 8.2MHz
Color: Barcode
Material: Copper Plate Paper


Dimensions: 40x40 mm
Packaging Capability: 1000 per
rolls, 20 rolls per carton
Packaging & Weight: 295 mm x
295 mm x 230 mm, 10.5Kg



RF Label
DHI-ISC-ETR1-5050

Frequency: 8.2MHz
Color: Barcode
Material: Copper Plate Paper

Dimensions: 50x50mm
Packaging Capability: 1000 per
rolls, 20 rolls per carton
Packaging & Weight: 422 mm x
295 mm x 235 mm, 11Kg



RF Label
DHI-ISC-ETR1-2626 / DHI-ISC-ETR1-2626-B

Frequency: 8.2MHz
Color: Barcode/White
Material: Copper Plate Paper

Dimensions: 26x26 mm
Packaging Capability: 1000 per
rolls, 20 rolls per carton
Packaging & Weight: 260 mm x
260 mm x 170 mm, 5.5Kg



Regular RF Label
DHI-ISC-ETR1-R33-B / DHI-ISC-ETR1-R33

Frequency: 8.2MHz
Color: Barcode/White
Material: Copper Plate Paper

Dimensions: ø33 mm
Packaging Capability: 1000 per
rolls, 20 rolls per carton
Packaging & Weight: 270 mm x
270 mm x 230 mm, 6.8Kg




Transparent RF label
DHI-ISC-ETR1-1965-T

Color:Transparent	Packaging Capability: 1000 per rolls, 20 rolls per carton
Material: Copper Plate Paper	
Frequency: 8.2MHz	Packaging & Weight: 320 mm x 320 mm x 135 mm, 7.5Kg
Dimensions: 19x65 mm	



Transparent RF label
DHI-ISC-ETR1-1552-T

Color: Transparent	Packaging Capability: 1000 per rolls, 20 rolls per carton
Material: Copper Plate Paper	
Frequency: 8.2MHz	Packaging & Weight: 310 mm x 310 mm x 130 mm, 6Kg
Dimensions: 15x52mm	



Frozen RF Label
DHI-ISC-ETR1-4040F / DHI-ISC-ETR1-4040F-B

Color: White	Packaging Capability: 1000 per rolls, 20 rolls per carton
Material: Pearlescent film	
Frequency: 8.2MHz	Packaging & Weight: 295 mm x 295 mm x 230 mm, 10.5Kg
Dimensions: 40x40 mm	




RF Jewellery Label
DHI-ISC-ETR1-R40J / DHI-ISC-ETR1-R40J-B

Color: Barcode/White	Packaging Capability: 1000 per rolls, 20 rolls per carton
Material: Copper Plate Paper	
Frequency: 8.2MHz	Packaging & Weight: 0.023 CBM, 7.5kg
Dimensions: ø 40 mm	



RF Jewellery Label
DHI-ISC-ETR1-3030J / DHI-ISC-ETR1-3030J-B


Color: Barcode/White	Packaging Capability: 1000 per rolls, 20 rolls per carton
Material: Copper Plate Paper	
Frequency: 8.2MHz	Packaging & Weight: 0.021 CBM, 8kg
Dimensions: 30x30 mm	



RF Label STP
DHI-ISC-ETR1-4660Y-B


Color: White	Packaging Capability: 20,000 pcs per carton
Material: Silk and satin	
Frequency: 8.2MHz	Packaging & Weight: 490 mm x 295 mm x 320 mm, 22.5Kg
Dimensions: 46x60 mm	

Alarming Tags




AM/RF Mini Cable Lock
DHI-ISC-ETA2A-T307-S / DHI-ISC-ETR2A-T307-S

Frequency: 58KHz / 8.2MHz	Dimensions: 60x30x16 mm, 24g
2 Alarming Methods	Packaging Capability: 200 pcs per carton
Lanyard Length: 25 cm	
Lock strength: Super	Packaging & Weight: 380 mm x 335 mm x 280 mm, 5.5Kg
Material: ABS	




AM/RF Cable Lock
DHI-ISC-ETA2A-T301-S / DHI-ISC-ETR2A-T301-S

Frequency: 58KHz/8.2MHz	Dimensions: 60x34x16mm, 30g
2 Alarming Methods	Packaging Capability: 200 pcs per carton
Lanyard Length: 17.5 cm	
Lock strength: Super	Packaging & Weight: 380 mm x 290 mm x 330 mm, 6.5Kg
Material: ABS	




AM Mini Spider Net
DHI-ISC-ETA2A-T606A-S

Frequency: 58 KHz	Dimensions: ø50x42 mm, 100g
2 Alarming Methods	Packaging Capability: 100 pcs per carton
Net Length: 25 cm	
Lock strength: Super	Packaging & Weight: 550 mm x 290 mm x 270 mm, 10Kg
Material: ABS	




AM Mini Spider Net
DHI-ISC-ETA2A-T606B-S / DHI-ISC-ETA3A-T606B-S / DHI-ISC-ETR3A-T606B-S / DHI-ISC-ETA2A-T606C-S / DHI-ISC-ETA2A-T606D-S

Frequency: 58 KHz	Dimensions: ø50x42 mm, 100g
2 / 3 Alarming Methods	Packaging Capability: 100 pcs per carton
Net Length: 36 cm / 50 cm / 72 cm	
Lock strength: Super	Packaging & Weight: 550 mm x 290 mm x 270 mm, 10Kg
Material: ABS	



Dual-Frequency Mini Spider
DHI-ISC-ETD2A-T504A-S

Frequency: 58KHz+8.2MHz	Dimensions: ø50x42mm,60g
2 Alarming Methods	Packaging Capability: 100 pcs per carton
Lanyard Length: 60 cm	
Lock strength: Super	Packaging & Weight: 380 mm x 290 mm x 180 mm, 6.5Kg
Material: ABS	



Dual-Frequency Spider
DHI-ISC-ETD2A-T511A-S / DHI-ISC-ETD2A-T511B-S

Frequency: 58KHz+8.2MHz	Dimensions: ø73x52mm, 85g/ 105g
2 Alarming Methods	Packaging Capability: 100 pcs per carton
Net Length: 80 cm / 160 cm	
Lock strength: Super	Packaging & Weight: 380 mm x 340 mm x 280 mm, 9Kg / 380 mm x 290 mm x 350 mm, 11Kg
Material: ABS	

Safer

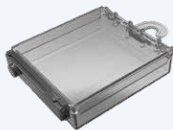


AM Safer

DHI-ISC-ETA5-F85

Frequency: 58KHz
Used For: Day& Night face
creams, Perfume
inner size: 85x75x75mm
Material: PC

Dimensions: 140g
Packaging Capability: 100 pcs per
carton
Packaging & Weight: 600 mm x
430 mm x 455 mm, 20kg



AM Safer

DHI-ISC-ETA5-F120

Frequency: 58KHz
Used for: Gillette Fusion, Venus
Divine 4&8 packs
inner size: 120x110x28mm
Material: PC

Dimensions: 140g
Packaging Capability: 100 pcs per
carton
Packaging & Weight: 530 mm x
300 mm x 435 mm, 14Kg



AM Safer

DHI-ISC-ETA5-F194

Frequency: 58KHz
Used For: Double DVD, Facial
Mask, Electronics
Inner Size: 194x147x36mm
Material: PC

Dimensions: 270g
Packaging Capability: 50 pcs per
carton
Packaging & Weight: 580 mm x
400mm x 340mm,13.5kg



AM Safer

DHI-ISC-ETA5-F240

Frequency: 58KHz
Used for: Gloves, PSP UMD
box, Switch card box
Inner Size: 240x108x20mm
Material: PC

Dimensions: 190g
Packaging Capability: 100 pcs per
carton
Packaging & Weight: 530 mm x
515 mm x 455 mm, 6.8Kg

Function Tags



AM/RF Optical Tag

DHI-ISC-ETA5-T100 / DHI-ISC-ETR5-T100

Frequency: 58KHz/8.2MHz
Color: Gray
Mechanical Lock
Material: ABS

Dimensions: 25mmx23mmx28mm
Packaging Capability: 1,000 pcs
per carton
Packaging & Weight: 380 mm x
290 mm x 200 mm, 10kg



AM/RF Optical Tag

DHI-ISC-ETA5-T110 / DHI-ISC-ETR5-T110

Frequency: 58KHz/8.2MHz
Color: Black
Mechanical Lock
Material: ABS

Dimensions: 70mmx15mmx23mm
Packaging Capability: 1,000 pcs
per carton
Packaging & Weight: 0.027 CBM,
13kg



AM/RF Lanyard Tag

DHI-ISC-ETA5-T040 / DHI-ISC-ETR5-T040

Frequency: 58KHz/8.2MHz
Color: Gray
Lanyard Length: 100mm
Material: HIPS

Dimensions: 53x13x24mm
Packaging Capability: 20,000 pcs
per carton
Packaging & Weight: 400 mm x
300 mm x 190 mm, 8.2kg/8.5kg



AM/RF Lanyard Pencil Tag

DHI-ISC-ETA5-T012C / DHI-ISC-ETR5-T012C

Frequency: 58KHz/8.2MHz
Color: Gray
Lanyard Length: 170mm
Material: HIPS

Dimensions: 46x13x18.5mm
Packaging Capability: 1,000 pcs
per carton
Packaging & Weight: 380mmx-
290mmx250mm,10.5kg



AM/RF Bottle Tag

DHI-ISC-ETA5-B038 / DHI-ISC-ETR5-B038

Frequency: 58KHz/8.2MHz
Color: Grey
Lanyard Length: 115mm
Material: ABS

Dimensions: 58x51x13mm
Packaging Capability: 100 pcs per
carton
Packaging & Weight: 590 mm x
400 mm x 160 mm, 12kg

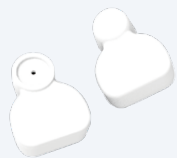


AM/RF Bottle Tag

DHI-ISC-ETA5-B102-S / DHI-ISC-ETR5-B102-S

Frequency: 58KHz/8.2MHz
Color: Purple
Lock strength: Super
Material: ABS

Dimensions: 103x73x59mm
Packaging Capability: 100 pcs per
carton
Packaging & Weight: 590mm x
400mm x 130mm, 7.0 kg



AM Triangle Tag

DHI-ISC-ETA5-T053

Frequency: 58KHz
Color: White
Material: ABS
Dimensions: 28.5x23x18.3mm
Packaging Capability: 1,000 pcs per carton
Packaging & Weight: 380mm x 290mm x 200mm, 14kg



AM/RF Triangle Bottle Tag

DHI-ISC-ETA5-B005 / DHI-ISC-ETR5-B005

Frequency: 58KHz/8.2MHz
Color: Black
Lanyard Length: 170mm
Material: ABS
Dimensions: 30x36x40mm
Packaging Capability: 500 pcs per carton
Packaging & Weight: 380mmx-290mmx300mm, 10kg



Stop Lock

DHI-ISC-ET5-T705A

Color: Red
Dimensions: 19x15x38mm
Packaging Capability: 1000 Locks per Carton
Packaging & Weight: 400x300x150mm, 6.7kg



Nipple Tag

DHI-ISC-ET5-T048

Color: Grey
Dimensions: Ø16mmx17.5mm
Packaging Capability: 5000 pcs per carton
Packaging & Weight: 450x300x200mm, 14kg



AM/RF Crab Bottle Tag

DHI-ISC-ETA5-B040 / DHI-ISC-ETR5-B040

Frequency: 58KHz/8.2MHz
Color: Black
Protection range: φ27-32mm
Material: ABS
Dimensions: 22x70mm
Packaging Capability: 500 pcs per carton
Packaging & Weight: 380 mm x 290 mm x 300 mm, 9kg



AM/RF Metal Belt Bottle Tag

DHI-ISC-ETA5-B008A / DHI-ISC-ETR5-B008A

Frequency: 58KHz/8.2MHz
Color: Grey
Lanyard Length: 17.5cm
Material: ABS
Dimensions: 36x30x32mm
Packaging Capability: 500 pcs per carton
Packaging & Weight: 380mmx-290mmx300mm, 13kg



Recoiler Pull Box

DHI-ISC-ET5-T407

Color: Black
Material: ABS
Lanyard: 900x0.9mm
Dimensions: 51x33x16mm
Packaging Capability: 500pcs per carton
Packaging & Weight: 0.033 CBM, 10.5kg



RF Metal Belt Bottle Tag

DHI-ISC-ETA5-B008B/ DHI-ISC-ETR5-B008B

Frequency: 58KHz/8.2MHz
Color: Grey
Lanyard Length: 720mm
Material: ABS
Dimensions: 36x30x32mm
Packaging Capability: 250 pcs per carton
Packaging & Weight: 380 mm x 290 mm x 300 mm, 13kg

Hard Tags



AM/RF Mini Pencil Tag

DHI-ISC-ETA5-T010/ DHI-ISC-ETR5-T010

Frequency: 58KHz/8.2MHz
Color: Gray
Material: ABS

Dimensions: 46x13x18.5mm
Packaging Capability: 1,000 pcs per carton
Packaging & Weight: 400 mm x300 mmx130 mm, 6kg/7.1kg



AM/RF Mini Pencil Tag

DHI-ISC-ETA5-T010C / DHI-ISC-ETR5-T010C

Frequency: 58KHz/8.2MHz
Color: Gray
Material: HIPS

Dimensions: 46x13x18.5mm
Packaging Capability: 1,000 pcs per carton
Packaging & Weight: 380mmx-290mmx140mm,8.5kg



AM/RF Pencil Tag

DHI-ISC-ETA5-T041 / DHI-ISC-ETR5-T041

Frequency: 58KHz/8.2MHz
Color: Gray
Material: ABS

Dimensions: 52x13x18.5mm
Packaging Capability: 1,000 pcs per carton
Packaging & Weight: 400 mm x 300 mm x 160 mm, 7kg



AM/RF Pencil Tag

DHI-ISC-ETA5-T041C / DHI-ISC-ETR5-T041C

Frequency: 58KHz/8.2MHz
Color: Gray
Material: HIPS

Dimensions: 52x13x18.5mm
Packaging Capability: 1,000 pcs per carton
Packaging & Weight: 380mmx-290mmx160mm,9kg



AM/RF Big Pencil Tag

DHI-ISC-ETA5-T069 / DHI-ISC-ETA5-T069C

Frequency: 58KHz
Color: Grey
Material: ABS

Dimensions: 56x16x18.5mm
Packaging Capability: 1,000 pcs per carton
Packaging & Weight: 400 mm x 300 mm x 160 mm, 8.3kg



AM Ultra Pencil Tag

DHI-ISC-ETA5-T901 / DHI-ISC-ETA5-T901C

Frequency: 58KHz
Color: Grey
Material: ABS

Dimensions: 63x16x18.5mm
Packaging Capability: 1,000 pcs per carton
Packaging & Weight: 400mm x 300mm x 160mm, 10.3 kg



AM Hammer Tag

DHI-ISC-ETA5-T009

Frequency: 58KHz
Color: Gray
Material: ABS

Dimensions: 69x26x22mm
Packaging Capability: 1,000 pcs per carton
Packaging & Weight: 380 mm x 290 mm x 270 mm, 14.5kg



AM Slipper Tag

DHI-ISC-ETA5-T904

Frequency: 58KHz
Color: Gray
Material: HIPS

Dimensions: 69x30x18.5mm
Packaging Capability: 1,000 pcs per carton
Packaging & Weight: 380mmx-290mmx310mm,11.5kg



AM/RF Golf Tag

DHI-ISC-ETA5-T845 / DHI-ISC-ETR5-T845

Frequency: 58KHz/8.2MHz
Color: Gray
Material: HIPS

Dimensions: Ø45 mmx21.5mm
Packaging Capability: 1,000 pcs per carton
Packaging & Weight: 480 mm x 370 mm x 200 mm, 13.5kg



AM/RF Golf Tag

DHI-ISC-ETA5-T018 / DHI-ISC-ETR5-T018

Frequency: 58KHz/8.2MHz
Color: Gray/Black
Material: HIPS

Dimensions: Ø45mmx22mm
Packaging Capability: 1,000 pcs per carton
Packaging & Weight: 480mmx-370mmx200mm,15kg

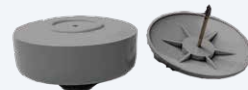


AM/RF Round Tag

DHI-ISC-ETA5-T840 / DHI-ISC-ETR5-T840

Frequency: 58KHz/8.2MHz
Color: White
Material: ABS

Dimensions: Ø40 mmx22.8mm
Packaging Capability: 1,000 pcs per carton
Packaging & Weight: 380 mm x 290 mm x 350 mm, 11kg




AM Polar Tag

DHI-ISC-ETA5-T834G / DHI-ISC-ETA5-T834B / DHI-ISC-ETA5-T834W

Frequency: 58KHz
Color: Grey/Black/White
Material: ABS

Dimensions: Ø34mmx20mm
Packaging Capability: 1,000 pcs per carton
Packaging & Weight: 0.024 CBM, 10kg



RF Square Tag

DHI-ISC-ETR5-T001

Frequency: 8.2MHz


Color: Black

Material: ABS

Dimensions: 46x40x19mm

Packaging Capability: 1,000 pcs per carton

Packaging & Weight: 590 mm x 400 mm x 115 mm, 7.7kg



RF Square Tag

DHI-ISC-ETR5-T001C

Frequency: 8.2MHz


Color: Black

Material: HIPS

Dimensions: 46x40x19mm

Packaging Capability: 1,000 pcs per carton

Packaging & Weight: 380mmx-290mmx250mm,10kg



RF Square Tag

DHI-ISC-ETR5-T004W / DHI-ISC-ETR5-T004B

Frequency: 8.2MHz

Color: White/Black

Material: ABS

Dimensions: 52x43x19mm

Packaging Capability: 1,000 pcs per carton

Packaging & Weight: 380 mm x 290 mm x 280 mm, 11kg



RF Round Tag

DHI-ISC-ETR5-T013 / DHI-ISC-ETR5-T013C

Frequency: 8.2MHz


Color: White

Material: ABS

Dimensions: Ø50mm x 20mm

Packaging Capability: 1,000 pcs per carton

Packaging & Weight: 380mm x 290mm x 280mm,10kg



RF Ink Tag

DHI-ISC-ETR5-T171

Frequency: 8.2MHz

Color: White


Ink Color: Red & Yellow

Material: ABS

Dimensions: Ø50mmx20mm

Packaging Capability: 500 pcs per carton

Packaging & Weight: 590mm x 400mm x 210mm, 12.5 kg



RF Mini Dome Tag

DHI-ISC-ETR5-T830

Frequency: 8.2MHz

Color: Black


Material: ABS

Dimensions: Ø30mmx20mm

Packaging Capability: 1,000 pcs per carton

Packaging & Weight: 0.024 CBM, 9kg

Accessories



Ink Pin


DHI-ISC-ET-P020Y/DHI-ISC-ET-P020B

Color: Red / Yellow

Dimensions& Weight: 20mmx20mmx16mm

Packaging Capability: 4000pcs/cartonPins

Packaging & Weight: 590mm x 400mm x 220mm, 8.0 kg



Ink Pin


DHI-ISC-ET-P016B/DHI-ISC-ET-P016Y/DHI-ISC-ET-P016R

Color: Blue

Dimensions& Weight: 16mmx16mmx16mm

Packaging Capability: 6000pcs/carton

Packaging & Weight: 590mm x 400mm x 220mm, 8.5 kg



Cone Steel Pin Smooth


DHI-ISC-ET-P006A / DHI-ISC-ET-P006B

Color: Silver

Dimensions& Weight: 12mmx12mmx16mm

Packaging Capability: 1000pcs/box

Packaging & Weight: 117 mm x 110 mm x 60 mm, 1.0 kg



Flat Steel Pin Smooth


DHI-ISC-ET-P001A / DHI-ISC-ET-P001B

Color: Silver

Dimensions& Weight: 10.5mmx10.5mmx16mm

Packaging Capability:1000pcs/-box

Packaging & Weight: 135 mm x 110 mm x 60 mm, 1.3 kg



Lanyard

DHI-ISC-ET5-L002W / DHI-ISC-ET5-L002B

Color: Black/White

Dimensions& Weight: 175mmx1.8mm

Packaging Capability: 5000 pcs per carton

Packaging & Weight: 370 mm x 280 mm x 150 mm, 9kg

Detacher



Sunk Detacher

DHI-ISC-ED0001

Magnetism Strength: ≥ 9500 Gs
Dimensions& Weight: $\varnothing 74\text{mm} \times 37\text{mm}$
Packaging Capability: 1 Pcs Per box
Packaging & Weight: $77\text{mm} \times 77\text{mm} \times 55\text{mm}$, 0.18 kg



Super Detacher

DHI-ISC-ED0005

Magnetism Strength: ≥ 9500 Gs
Dimensions& Weight: $\varnothing 72\text{mm} \times 42\text{mm}$
Packaging Capability: 1 Pcs Per box
Packaging & Weight: $77\text{mm} \times 77\text{mm} \times 55\text{mm}$, 0.18 kg



Round Detacher

DHI-ISC-ED0002

Magnetism Strength: ≥ 9500 Gs
Dimensions& Weight: $\varnothing 70\text{mm} \times 29\text{mm}$
Packaging Capability: 1 Pcs Per box
Packaging & Weight: $77\text{mm} \times 77\text{mm} \times 55\text{mm}$, 0.18 kg



Star Super Detacher

DHI-ISC-ED-0919

Magnetism Strength: $\geq 11000\text{Gs}$
Dimensions& Weight: $\varnothing 80 \times 57\text{mm}$
Packaging Capability: 1 Pcs Per box
Packaging & Weight: $80\text{mm} \times 80\text{mm} \times 55\text{mm}$, 0.42kg



Alarm Super Detacher

DHI-ISC-ED-0076

Magnetism Strength: ≥ 11000 Gs
Built in alarm function, triggered when detacher damaged
Alarm Sound ≥ 80 dB
Dimensions& Weight: $111\text{mm} \times 51\text{mm} \times 49\text{mm}$
Packaging Capability: 1 Pcs Per box
Packaging & Weight: $117\text{mm} \times 87\text{mm} \times 65\text{mm}$, 0.4kg



Lipstick Detacher

DHI-ISC-ED0006

Magnetism Strength: ≥ 4500 Gs
Dimensions& Weight: $\varnothing 21.7 \times 58\text{mm}$, 20g
Packaging Capability: 1 Pcs Per box
Packaging & Weight: $30\text{mm} \times 30\text{mm} \times 60\text{mm}$, 0.06 kg



Optical Tag Detacher

DHI-ISC-ED0007

Dimensions& Weight: $15\text{mm} \times 95\text{mm}$, 58g
Packaging Capability: 10 pcs/bag, 5 bags/carton
Packaging & Weight: $140\text{mm} \times 75\text{mm} \times 75\text{mm}$, 0.1 kg



Handheld Tag Detacher Gun

DHI-ISC-ED-0101

Lanyard Length: 1100 mm
Dimensions& Weight: $180\text{mm} \times 110\text{mm} \times 75\text{mm}$
Packaging Capability: 1 Pcs Per box
Packaging & Weight: $280\text{mm} \times 125\text{mm} \times 80\text{mm}$, 0.45kg



Electronic Detacher-Embedded

DHI-ISC-ED-103

Dimensions& Weight: $220\text{mm} \times 180\text{mm}$
Packaging Capability: 1 Pcs Per box
Packaging & Weight: 0.04 CBM, 8.5kg



Electronic Detacher

DHI-ISC-ED-102

Dimensions& Weight: $150\text{mm} \times 102\text{mm}$
Packaging Capability: 1 Pcs Per box
Packaging & Weight: 0.025 CBM, 7.5kg

Deactivator



AM Deactivator

Adapt to decode most EAS Labels, sensitive reaction, degaussing faster and most through.

Efficient decoding, 120 Labels per minute, up to 10cm decoding height.

High anti-interference, more stable performance.

Product Model	DHI-ISC-EDA-100 AM Deactivator 220V	DHI-ISC-EDA-110 AM Deactivator 110V
Frequency	58KHz	
Detect AM Label	≤10cm	
Bottom shell material	ABS	
Input Voltage	220 VAC @ 50 Hz / 60 Hz	100 VAC @ 50 Hz / 60 Hz
Max Power consumption	25W	
Dimensions& Weight	240mm×200mm×60mm	
Packaging & Weight	295×230×90mm, 1kg	
Operating Temperature	0°C to 50°C	
Certification	CE LVD, CE RED, FCC, ROHS	



RF Deactivator

Adapt to decode most EAS Labels, sensitive reaction, degaussing faster and most through.

Efficient decoding, 120 Labels per minute, up to 10cm decoding height.

High anti-interference, more stable performance.

Product Model	DHI-ISC-EDR-100 RF Deactivator
Frequency	8.2MHz
Detect AM Label	≤10cm
Bottom shell material	ABS
Input Voltage	100 – 240 VAC @ 50 Hz / 60 Hz
Power consumption	5W
Dimensions& Weight	242mm×232mm×27mm
Packaging & Weight	260×260×80mm, 1.04kg
Operating Temperature	0°C to 50°C
Certification	CE EMC, CE LVD, CE RED, ROHS, FCC