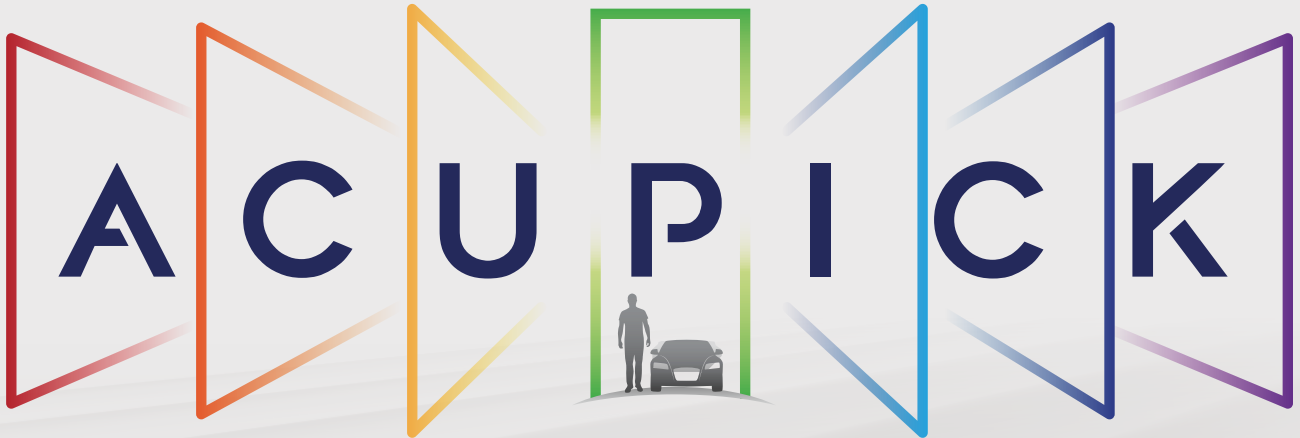


Powered by AI



JUST ONE PICK

In 2023, Dahua released the industry-leading search technology AcuPick. Following the innovative concept of in-depth integration, Dahua effectively utilizes both front-end and back-end intelligence to help users locate targets more conveniently, more quickly, and more accurately in massive video data.



Quicker Search



Easier Operation



High Accuracy



Reduced TCO

Overview – AcuPick

Dahua effectively utilizes both front-end and back-end intelligence to realize AcuPick. The AcuPick technology is a real video search engine that can quickly locate the information you need. Use it to find a lost individual, locate a specific vehicle, or gather evidence of a property damage incident.



Quicker Search

AcuPick can quickly locate video clips of human/vehicle targets, saving up to 99% searching time.

Easier Operation

Compared with traditional searching mode, AcuPick only needs 1 pick to extract targets, saving lots of complex operation.

High Accuracy

AcuPick provides users with high accuracy through its comprehensive eigenvalues for human and vehicle targets.

Reduced TCO

With lower operation costs and no expensive computing server needed, the total cost of ownership is significantly reduced.

Quicker Search

Directly locate the target: Users can quickly and easily filter out vast amounts of irrelevant information and locate the useful video clips of the target.

CCTV System:
Manually search frame by frame

Manual Check

SMD:
Filter human/vehicle targets for retrieval

Search by SMD

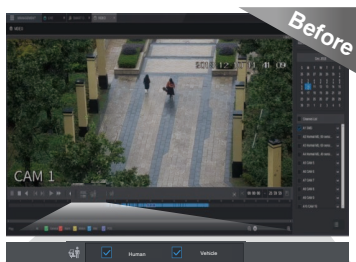
AI Search:
Pre-configure the search time and check the attributes of objects

AI Search (Metadata)

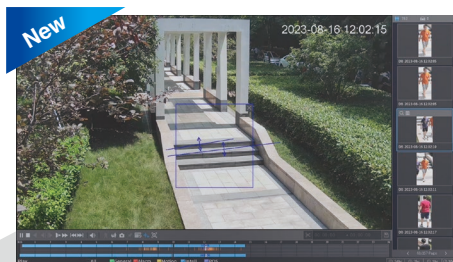
AcuPick:
Directly locate the video clips of the target (filter out irrelevant information)

AcuPick

Smart Search by Intrusion Users can draw an intrusion rule to search for video clips during SMD playback, helping them to quickly and easily identify the target that entered the area.



Users can only select human/vehicle targets.

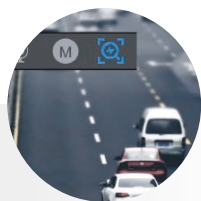


AcuPick allows drawing of an area and searching for human/vehicle targets that have entered this area while performing a video search of the target at the same time.

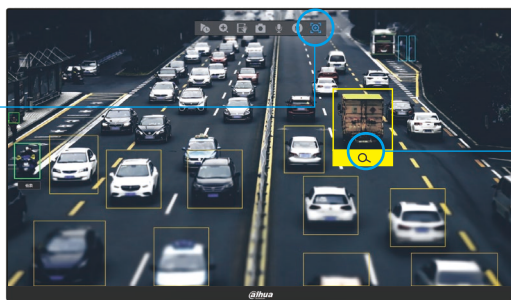
The thumbnails of relevant targets will be displayed on the right side of the screen. Users can click on the thumbnails to quickly lock the target and carry out AcuPick on it.

Easier Operation

Just One Pick AcuPick is super easy to use. Users can search in preview or playback with just one pick! With just one click, users can freeze the video and frame the target.

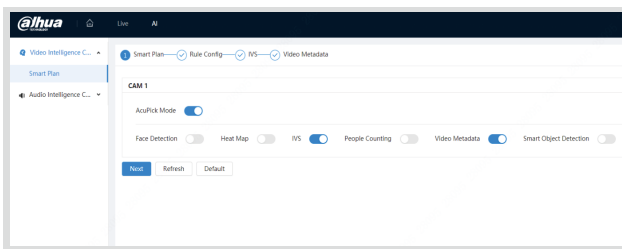


1 Click Freeze & Frame

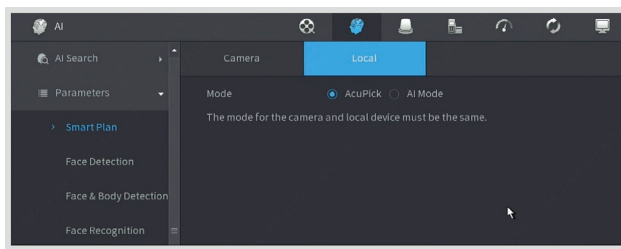


1 Click Pick Up

Enabled by Default In IPC WizMind S & NVR5-EI, AcuPick is enabled by default. Utilizing AI computing power, it can quickly and accurately extract attribute information of targets. Additionally, Perimeter Protection can be turned on simultaneously on the IPC side.



IVS and Video Metadata can be enabled at the same time on IPC



AcuPick/AI mode options on NVR (AcuPick is enabled by default)

Multiple Entrances (Local & Web) Users can flexibly choose to perform AcuPick related operations on the local side or the web side based on their actual application scenarios.



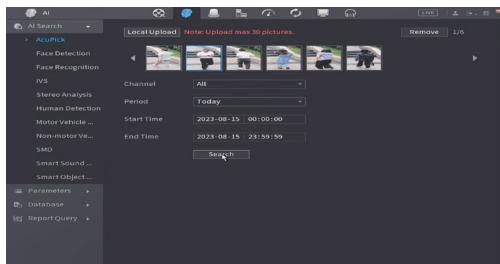
NEW

Multiple Entrances (AI Preview / AI Search) When an AI event occurs, users need to search for more relevant videos of the human/vehicle target in order to check the reliability and accuracy of the event. The combination of AI events + AcuPick can play a crucial role in this case. AcuPick functions such as instant playback and multi preview of newly added entrances can significantly help assess the situation and greatly bring convenience to users.

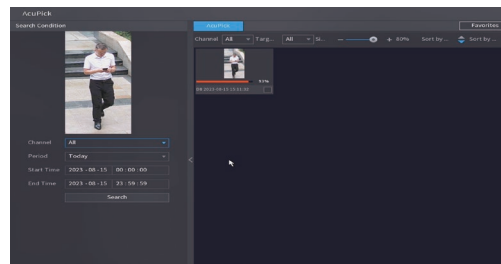


NEW

AcuPick: Search by Image In some emergency situations, users do not know when and where the target they are looking for appears. Nevertheless, with relevant images, users can utilize AcuPick's Search by Image function.



Maximum of 30 images can be uploaded and searched one by one



Shows related results of uploaded image

Smart Secondary Search AcuPick can perform a second accurate search based on the search results. Click the freeze option in the search and playback interface to freeze a frame. The system will automatically extract the detected target. Click the detected image to complete the second search.



NEW

AI by Device with AcuPick The newly released NVR6-XI baseline supports AcuPick. With powerful AI capacity, it supports integration of back-end AI functions (FR, Video Metadata, IVS, SMD) with AcuPick, providing users with a more user-friendly and convenient monitoring experience.

AcuPick Support

Max. 64-channel AcuPick

Intelligent Capacity

- Max. 8-channel Face Recognition
- Max. 8-channel Video Metadata
- Max. 24-channel Perimeter Protection
- Max. 32-channel SMD Plus



NVR6-XI

*The above data are measured under full loading

AcuPick + AI by device

- 16-ch AcuPick + 8-ch FR (FD+FR by device)
- 16-ch AcuPick + 24-ch IVS
- 8-ch AcuPick + 8-ch Video Metadata
- 16-ch AcuPick + 32-ch SMD
- 32-ch AcuPick + 2-ch FR / 20-ch SMD / 12-ch IVS / 4-ch Video Metadata

AcuPick supports managing search results classified according to time or similarity. It supports useful features such as favorite videos, hide irrelevant videos, and export videos that need to be used.

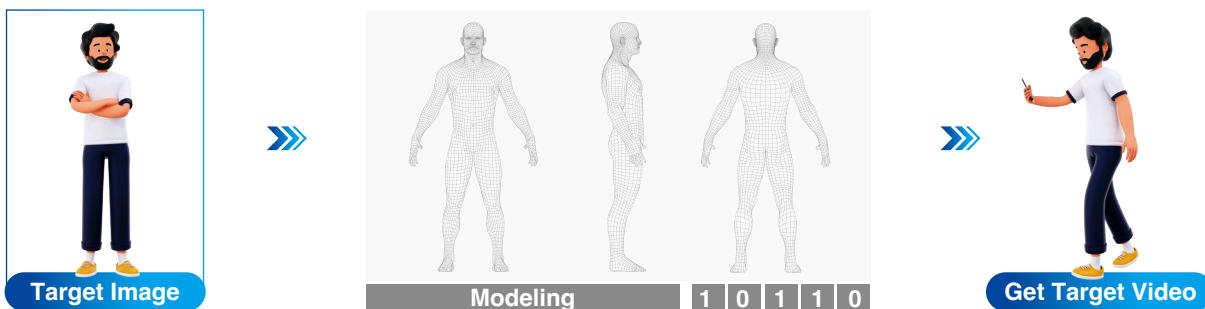
Build a comprehensive set of video evidence from multiple video sources in order to create an accurate narrative of events.



Users can find all marked videos in the 'favorites' bar, which can be exported as MP4/DAV format.

High Accuracy

- IPC/NVR extracts and models the target's appearance details through an algorithm, mainly focusing on the appearance characteristics of the human body, such as clothing color, clothing style, gender, body shape, and other relevant information.
- It aims to determine whether the person/vehicle of interest appeared elsewhere at a distinct time captured by a different camera or the same camera at a different moment in time.



Reduced TCO

Lower Purchase Price (no server needed)

The IPC and NVR can effectively process data with intelligent computing power. They are suitable for small and medium-sized campus scenarios with fewer than 32 channels, without the need for a server.

Lower Operation Cost

AcuPick improves retrieval efficiency by providing easier operations, faster search functions, and higher accuracy. Furthermore, it is useful for various precise retrieval scenarios, reducing manpower and operational maintenance costs.



Application Scenarios

Shopping Mall

A mall has a large flow of people. Children can easily get lost or separated from their parents. When a child is missing, searching for them may require a lot of manpower and material resources. AcuPick's Secondary Search function allows you to locate relevant video information to immediately locate the lost child.



Parking Lot

Parking lots are not 100% safe. In case of a hit-and-run or vandalism, it is often difficult for the authorities to track down the culprit. The Smart Search by Intrusion, a feature of AcuPick, allows you to quickly identify and locate videos of targets that can be used as evidence.



Enterprise Park

An enterprise building is a relatively open environment, which poses risks of property loss to its employees if not monitored properly. To monitor the people entering and leaving the premises, AcuPick can traceback past movements of suspicious individuals in order to track down any illegal activities within the enterprise park and its surrounding areas.



Product Selection



IPC S(5-S3) Series ▶

- Supports AcuPick which is enabled by default
- Improved Image effect with AI-Powered Image
- Deeplight, smart H.264+/H.265+, 3D NR, BLC, HLC, Defog, Real WDR
- Video Metadata, Perimeter Protection, Smart sound detection, Face Detection, People Counting, Heat Map, Smart Object Detection
- Dual power backup (except box cameras); Plastic-free packaging
- IP67, IK10, P-iris, Heater



SD5A/6AL Series ▶

- Supports AcuPick which is enabled by default
- Perimeter Protection, Face Detection, Auto Tracking 3.0, Video Metadata, SMD 4.0
- Pan: 0° to 360° endless, Tilt: auto flip 180°, 300 Presets, 5 Patterns, 8 Tours, Auto Pan, Auto Scan
- IP67



NVR5-EI Series ▶

- Supports up to 16-channel AcuPick (only with AcuPick IPC/PTZ)
- 32ch@1080P decoding capacity
- Max. 384Mbps incoming/recording/outgoing bandwidth
- 2-channel face detection and recognition, 4-channel perimeter protection, 8-channel SMD plus



NVR6-XI Series ▶

- Supports up to 32-channel AcuPick (only with AcuPick IPC/PTZ)
- 32ch@1080P decoding capacity
- Max. 1280/1280/1024Mbps incoming/recording/outgoing bandwidth
- 8-channel FD & FR, 8-channel Video Metadata, 24-channel Perimeter Protection, 32-channel SMD Plus



- Supports automatic cross-device AcuPick (only with DSS Pro)
- Supports storage detection records on the platform
- Supports searching records on a single device
- Supports searching records stored on the platform from multiple devices (only with DSS Pro)

DAHUA TECHNOLOGY

Add: No.1199 Bin'an Road, Binjiang District, Hangzhou, China. 310053
Email: overseas@dahuatech.com
Website: www.dahuasecurity.com



YouTube



LinkedIn



Partner App



Website