



AI-NEW PTZ

AI IN Enhanced Wisesense PTZ



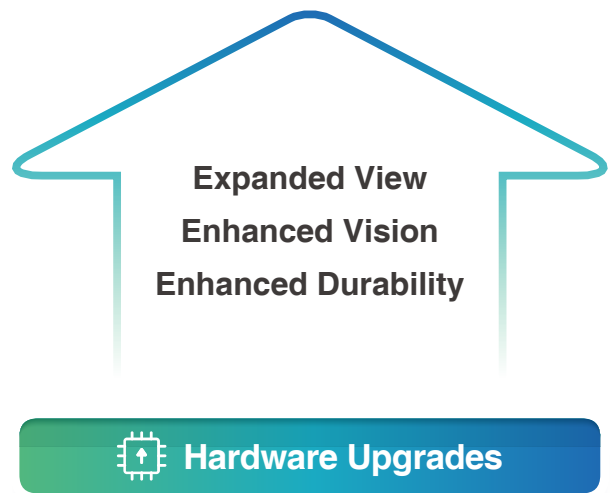
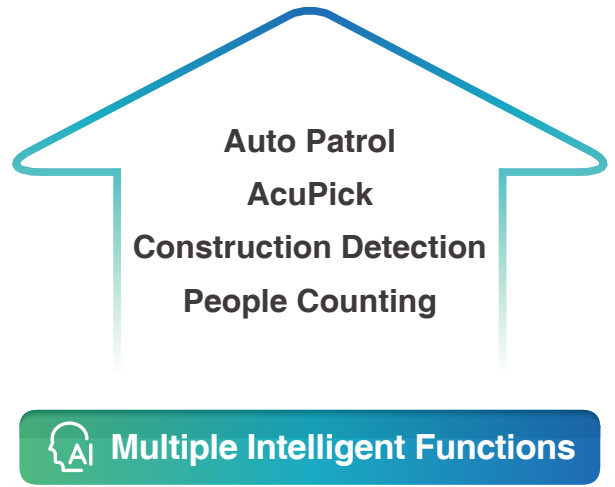
Multiple Intelligent Functions



Hardware Upgrades

| What is All-NEW PTZ?

All-NEW PTZ is short for "AI In Enhanced WizSense PTZ". Since 2024, the Wizsense Series has undergone annual upgrades in software, hardware, and packaging. The artificial intelligence software upgrade represents a significant breakthrough, encompassing a series of products that previously did not support AI technology. Now, these products fully integrate the latest AI technology as well as updates and iterations based on existing AI technology.



WizSense PTZ Product Overview

Pro | Continuously strengthening the advantages of Pro Series products



SD4A Series SD49 Series SD5A Series SD50 Series SD52C Series SD6CE Series

Lite | Mini Design, Powerful Performance, Super Cost-effective



SD1A Series SD2A Series SD22 Series SD29 Series SD3C Series

X-Spans | Expanded Views, Captured Details



SDT2A Series SDT3E Series SDT4E Series

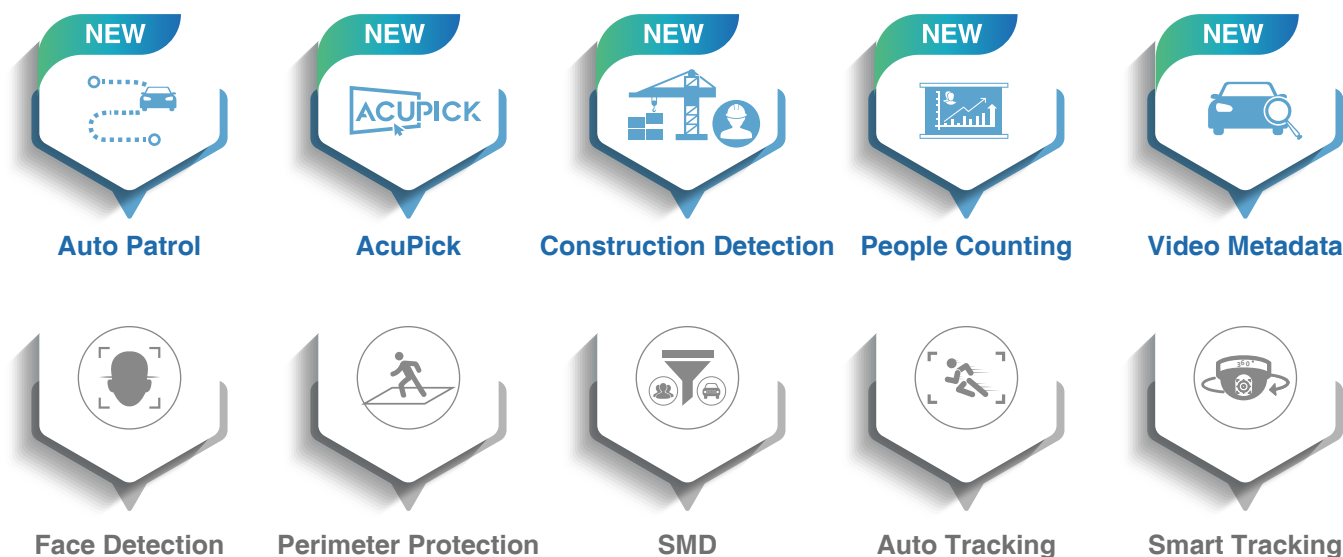
TiOC | 3-in-1 Camera: Effective deterrent against intruders



SD3E Series SD4E Series SD6C3 Series

Multiple Intelligent Functions

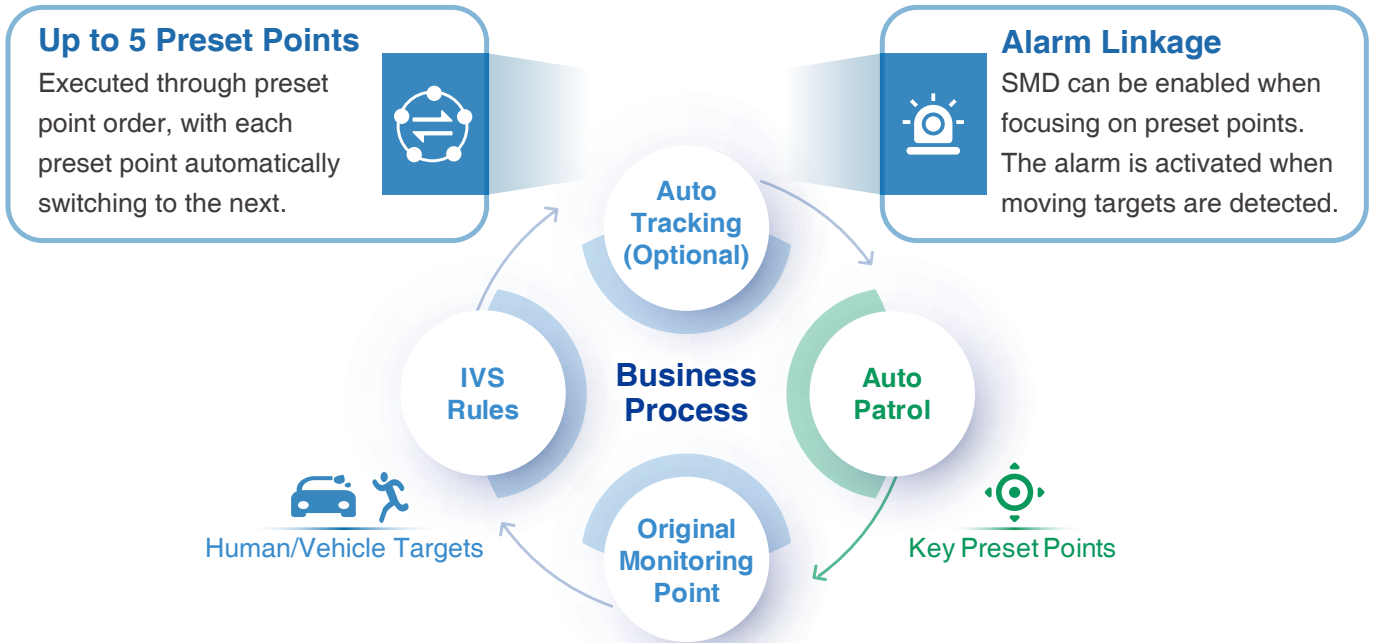
The upgrading program of fundamental functions is carried out using the newly added AI feature as well as the existing function upgrading, covering both Pro and Lite series products on different platforms.



New Functions Added	Existing Functions	Existing Functions Upgraded	Series	Models
Auto Patrol AcuPick Video Metadata (Vehicle Attributes) Construction Detection	Face Detection (with Attributes) Perimeter Protection SMD 4.0 Auto Tracking 3.0	/	SD6C	G Models
Auto Patrol AcuPick Video Metadata (Vehicle Attributes) People Counting		/	SD5A/50/52C	G Models
Auto Patrol AcuPick		/	SD4E	G Models
Auto Patrol AcuPick	Face Detection (with Attributes) Perimeter Protection SMD 4.0	/	SD49	G Models
Auto Patrol	Face Detection (no Attributes) Perimeter Protection SMD 3.0	/	SD49/4A	D Models
/	Non-AI Motion Detection (focused on human targets)	Motion Detection → SMD	SD2A	N Models

Auto Patrol

With Auto Patrol, the PTZ camera automatically performs key preset point patrols, mimicking the actions of security personnel. When the intelligent Video Surveillance (IVS) rules for human or vehicle target detection is triggered, the camera swiftly moves to the preset points for a thorough check. This helps identify potential dangers or abnormal situations, significantly reducing the workload of security personnel during manual patrols.



Application Scenario

Outdoor Open Scenes

For real-time monitoring of outdoor open scenes, set multiple key points in different directions to get supplemental global monitoring after tracking or triggering IVS rules.

Solution 1: Quick Target Location



- Setting 1-3 key locations as preset points
- Timely attention to the surrounding key scenarios
- Saves both time and labor costs

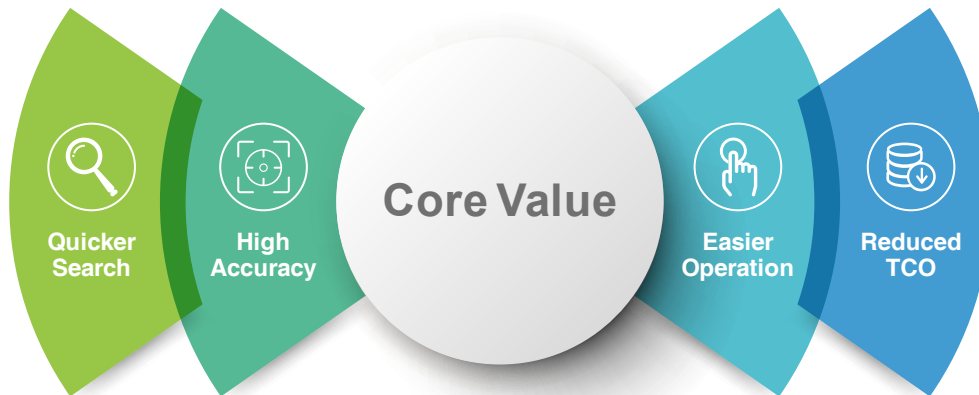
Solution 2: 360° Full Coverage Monitoring



- 1 original monitoring point + 5 preset points
- Each point covers 60° vision
- Realizes 360° monitoring with just one camera

AcuPick

Dahua's AcuPick is realized by effectively utilizing both front-end and back-end intelligence. The AcuPick technology is a real video search engine that can quickly locate information. Use it to find a lost individual, locate a specific vehicle, or gather evidence for a property damage incident.

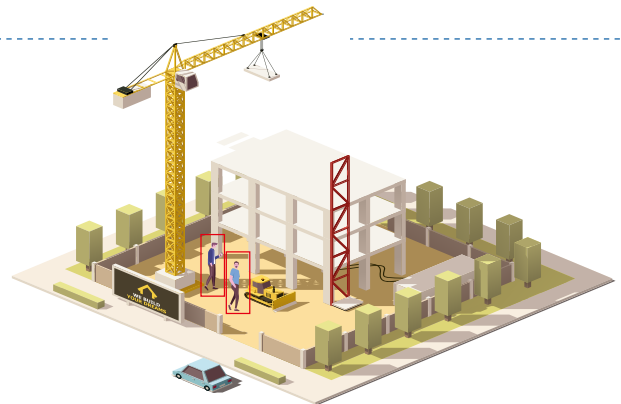


Construction Detection

The PTZ Construction Detection function includes PPE Detection, Lone Working Detection and Off-duty Detection.

Application Scenario: Construction Site

- One PTZ camera can cover most scenes through tour, saving installation and usage costs.
- Timely alarm sound through built-in speaker.
- Ensures detection in the whole construction site.



People Counting

The PTZ People Counting function includes People Counting in Area, Line Crossing and Queue Management.



Application Scenario: Amusement Park

- Both Queue Management and People Counting in Area can be used during business hours, while Perimeter Protection function can be enabled at night.
- For entrances and inside the park, one PTZ camera can observe different directions, realize real-time monitoring and offer real-time estimated queuing time in order to provide timely guidance.

Hardware Upgrades

Expanded View

The X-Spans series enlarges the camera view by expanding one or more lenses based on the traditional PTZ camera, providing both panoramic images and details in one camera.



Key Features



Panoramic & Detail In One View: Panoramic channel presents up to 180° ultra-wide view, while PTZ cameras look at the details in the scene.



Cost Reduction: Consists of one or two bullet cameras and one PTZ camera, effectively reducing both purchase and installation costs.



2 Intelligent Modes: Linkage Mode and Independent Mode are supported. Two channels can be linked to achieve smart tracking. They can also be used as two independent cameras.

Enhanced Vision & Durability

Powerful Zoom

Small PTZ cameras between 1-3 inches usually support up to 5x optical zoom.

10x

16x



SD3E Series SD3D Series

Extended Illumination

from 30m to 50m



SD29 Series

from 15m to 20m



SD1A Series

Enhanced Durability



OLD SD3A Series

Stronger cables
4-5 times rotations



NEW



NEW

SD3C Series SD3E Series

ENABLING A SMARTER SOCIETY AND BETTER LIVING

Dahua CEE & Nordic
Tel: +48 223957400
Email: dh.cen@dahuatech.com

Dahua Technology Poland SP.ZO.O
Tel: +48 223957400
Email: biuro.pl@dahuatech.com

Dahua Technology SRB D.O.O
Tel: +38 1 (11) 4429999
Email: dh.srb@dahuatech.com

Dahua Technology Denmark Aps
Email: Nordic.ne@dahuatech.com

Dahua Technology Hungary LTD
Tel: +36 17899852
Email: sales.hu@dahuatech.com

Dahua Technology Bulgaria EOOD
Tel: +35929950013
Support: support.bg@dahuatech.com

Dahua Technology SRL
Email: marketing.ro@dahuatech.com

Dahua Technology Czech.s.r.o.
Tel: +420 225 986 001
Email: admin.cz@dahuatech.com

Dahua Guvenlik Teknolojileri Sanayi ve Ticaret A.S.
Email: sales.tr@dahuatech.com

Dahua Technology Middle East FZE
Email: info.me@dahuatech.com

Dahua Technology Mexico S.A. DE C.V.
Tel: +52 55 67231936
Email: sales.mx@dahuatech.com
Support: support.mx@dahuatech.com

Dahua Technology Colombia S.A.S.
Tel: +57 6013106176
Email: marketing.co@dahuatech.com
Support: support.co@dahuatech.com

Dahua Technology Perú S.A.C
Tel: +511 500-8555
Email: sales.pe@dahuatech.com
Support: support.pe@dahuatech.com

Dahua Technology Chile SpA
Tel: +56 232705421
Email: sales.cl@dahuatech.com
Support: support.chile@dahuatech.com

Dahua Technology Argentina S.A.
Email: project.ar@dahuatech.com

Dahua Technology Panama S.A.
Email: sales.pa@dahuatech.com
Support: support.pa@dahuatech.com

Dahua Brazil
Tel: +55 11 32511871
Suporte Técnico: suporte.br@dahuatech.com
Vendas: comercial.br@dahuatech.com

Dahua Technology USA Inc.
Tel: +1 (949) 679-7777
Email: sales.usa@dahuatech.com
Support: support.usa@dahuatech.com

Dahua Technology Canada
Tel: +1 877-606-1590
Email: sales.usa@dahuatech.com
Support: support.usa@dahuatech.com

Dahua Europe BV
Tel: +31 (0) 85-0715700
Email: sales.benelux@dahuatech.com
Support: support.benelux@dahuatech.com

Dahua Iberia, S.L.
Tel: +34 917649862
Email: sales.iberia@dahuatech.com
Support: support.iberia@dahuatech.com

Dahua Technology Italy s.r.l.
Tel: +39 02 99912900
Email: info.italy@dahuatech.com
Support: support.italy@dahuatech.com

Dahua Technology GmbH
Tel: +49 211 2054 4120
Email: sales.de@dahuatech.com
Support: support.de@dahuatech.com

Dahua Technology France
Tel: +33 (0) 1 48 53 70 53
Email: sales.france@dahuatech.com
Support: support.france@dahuatech.com

Dahua Singapore
Tel: +65 65380952
Email: sales.sg@dahuatech.com

Dahua Malaysia
Tel: +60376620732
Email: sales.my@dahuatech.com

Dahua Indonesia
Tel: +6227893330
Email: sales.id@dahuatech.com
Support: support.id@dahuatech.com

Dahua Australia
Tel: +61 290306000
Email: sales.oc@dahuatech.com

Dahua New Zealand
Tel: +64 09 2823467
Technical Hotline: 0800 854 857
Email: Dahua_NZ@dahuatech.com

Dahua Philippines
Email: Dahua_Philippines@dahuatech.com

Dahua EEU Representative Office
Tel: 8 (800) 707-67-66
Email: info.ru@dahuatech.com

Dahua Technology Azerbaijan
Email: Dahua_Azerbaijan@dahuatech.com

Dahua Kazakhstan (Dahua Technology Kazakhstan LLP)
Tel: +7 727 3110838
Email: sales.kz@dahuatech.com

Dahua Uzbekistan (OOO "Dahua Vision")
Tel: +998 781488666

Dahua Technology Ukraine Office
Tel: +380674011526
Email: dahua.ukraine@dahuatech.com

Dahua Technology UK Limited
Tel: +44 (0) 1628 613 500
Email: sales.uk@dahuatech.com
Support: support.uk@dahuatech.com

Dahua Technology South Africa (Pty) Ltd | Head Office
Office Line: +27 10 593 3242
WhatsApp Business Help-Line: +27 84 072 9260
Toll-Free Help-Line: 080 099 0064
Email: sales.za@dahuatech.com
Support: support.za@dahuatech.com

Dahua Technology Nigeria Representative Ltd.
Email: Westafrica@dahuatech.com

Dahua Thailand
Tel: +66 2541 5188
Email: info.th@dahuatech.com

Dahua Republic of Korea
Tel: +82-2-6486-8889
Email: sales.kr@dahuatech.com

Dahua Vietnam
Tel: +84 1900 2620
Email: info.Dahuvietnam@dahuatech.com

Dahua Technology Japan
Tel: +81-3-6661-6818
Fax: +81-3-6661-6857
Email: Dahua_Japan@dahuatech.com

Dahua Technology India Private Limited
Tel: +91 124 4569100
Email: sales.india@dahuatech.com

* Design and specifications are subject to change without notice.

Ver. 1, Mar. 2024

DAHUA TECHNOLOGY

Add: No.1199 Bin'an Road, Binjiang District, Hangzhou, China. 310053
Email: overseas@dahuatech.com
Website: www.dahuasecurity.com



YouTube



LinkedIn



Partner App



Website